

DURANGO

---RED FEDERAL LIBRE---

1 Bermejillo - El Palmito	MEX-030
2 Durango - Ent. La Zarca	MEX-045
3 Durango - Mezquital	MEX-023
4 Durango - Torreón	MEX-040
5 Durango - Villa Unión	MEX-040
6 Ent. La Chicharrona - Cuencamé	MEX-049
7 Ent. La Zarca - Hidalgo del Parral	MEX-045
8 Ent. Los Herrera - Topia	MEX-036
9 Gómez Palacio - Jiménez	MEX-049
10 Gómez Palacio - La Unión	MEX-040
11 Gómez Palacio - Tlahualillo de Zaragoza	MEX-040
12 Gregorio García - Francisco I. Madero	MEX-040
13 Guadalupe Aguilera - Guanaceví	MEX-023
14 Hidalgo del Parral - Guadalupe y Calvo	MEX-024
15 Libramiento Exterior Cuencamé	MEX-049
16 Libramiento Nombre de Dios	MEX-045
17 Libramiento Oriente de Durango	MEX-045
18 Libramiento Sur de Durango	MEX-045
19 Paso por Chupaderos	MEX-045
20 Pedriceña - Ent. Rodeo	MEX-034
21 Ramal a Otinapa	MEX-040
22 Ramal a Santa Clara	MEX-049
23 Ramal a Velardeña	MEX-040
24 Ramal a Villa Juárez	MEX-040
25 Ramal a Villa Ocampo	MEX-045
26 Ramal Distribuidor Presa Peña del Águila	MEX-045
27 Zacatecas - Durango	MEX-045

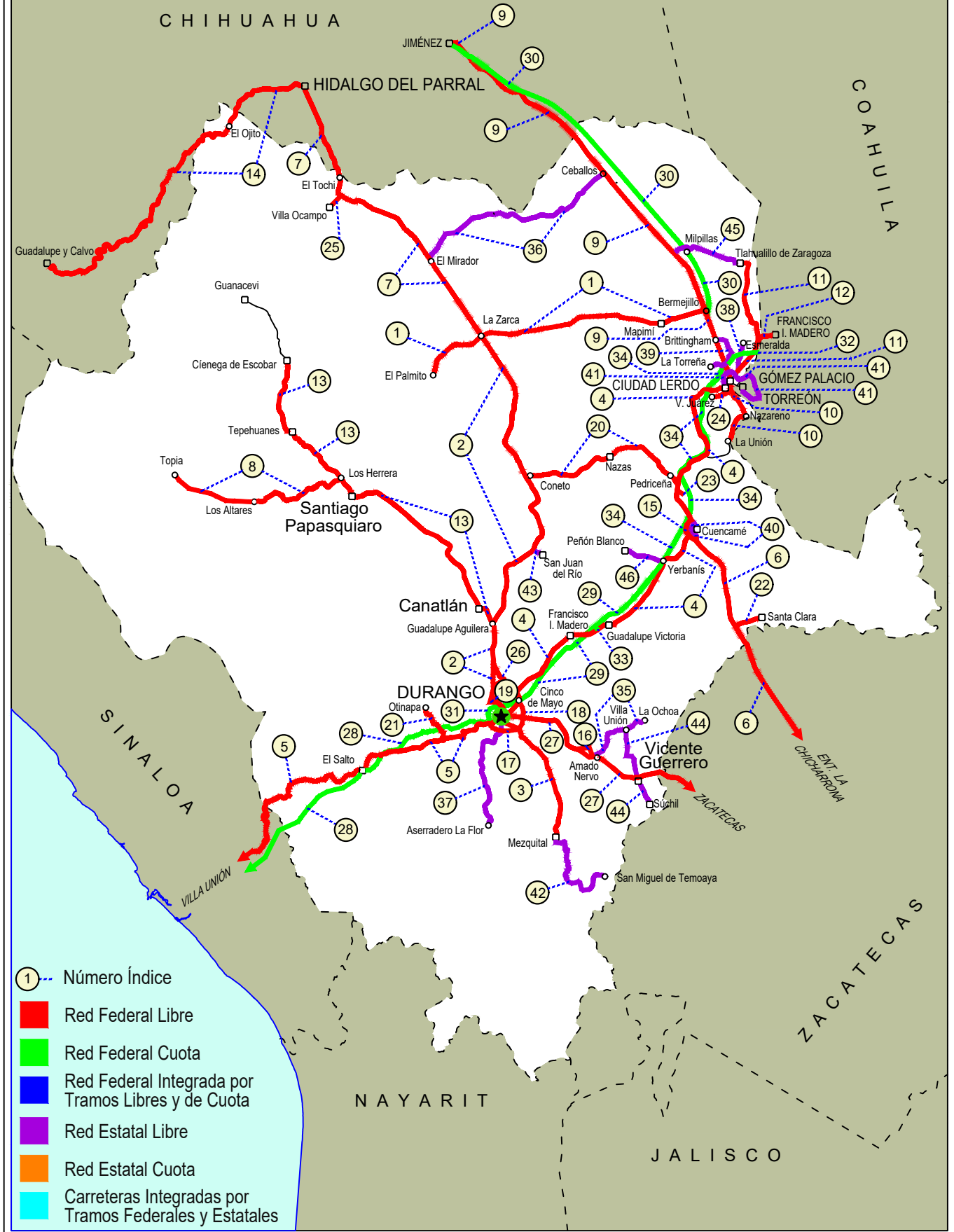
---RED FEDERAL DE CUOTA---

28 Durango - Mazatlán (Cuota)	MEX-040D
29 Durango - Yerbánis (Cuota)	MEX-040D
30 Gómez Palacio - Corralitos (Cuota)	MEX-049D
31 Libramiento de Durango (Cuota)	MEX-040D
32 Libramiento Norte de Torreón (Cuota)	MEX-040D
33 Ramal a Guadalupe Victoria	MEX-040D
34 Yerbánis - Gómez Palicio (Cuota)	MEX-040D

---RED ESTATAL LIBRE---

35 Amado Nervo - La Ochoa	DGO-542
36 Ceballos - El Mirador	DGO-044
37 Durango - Aserradero La Flor	DGO-115
38 Jabonoso - Esmeralda	DGO-363
39 La Torreña - Brittingham	DGO-325
40 Libramiento Cuencamé	DGO
41 Libramiento de Torreón-Gómez Palacio-Lerdo	COA-DGO-MEX-040-049
42 Mezquital - San Miguel de Temoaya	DGO
43 Ramal a San Juan del Río	DGO-290
44 Súchil - Villa Unión	DGO-241
45 Tlahualillo de Zaragoza - T.C. Gómez Palacio - Jiménez	MEX-040-DGO
46 Yerbánis - Peñón Blanco	DGO-316

10 DURANGO



DURANGO

1 CARR: Bermejillo - El Palmito

CLAVE: 10105

RUTA: MEX-030

AÑO: 2025

LUGAR	ESTACION				CLASIFICACION VEHICULAR EN PORCIENTO										COORDENADAS					
	KM	TE	SC	TDPA	M	A	B	C2	C3	T3S2	T3S3	T3S2R4	OTROS	A	B	C	K'	D	LATITUD	LONGITUD
Bermejillo	0.00	3	0	2207	2.8	82.3	2.5	5.5	2.0	3.1	1.0	0.7	0.1	85.1	2.5	12.4	0.087	0.560	25.891946	-103.633915
Santo Domingo	86.00	1	0	421	1.9	79.6	1.6	8.3	2.8	3.0	2.1	0.3	0.4	81.5	1.6	16.9	0.121	0.686	25.817128	-104.424370
Santo Domingo	86.00	3	0	401	1.6	82.4	1.7	4.3	2.4	4.5	2.4	0.7	0.0	84.0	1.7	14.3	0.095	0.553	25.813744	-104.447921
Ent. La Zarca	120.00	1	0	707	3.5	82.7	1.7	4.8	1.9	3.7	1.5	0.0	0.2	86.2	1.7	12.1	0.096	0.603	25.783371	-104.761625
Ent. La Zarca	120.00	3	0	138	1.0	89.0	0.8	5.7	1.6	1.1	0.3	0.5	0.0	90.0	0.8	9.2	0.123	0.706	25.776387	-104.773186
El Palmito	160.00	1	0	314	6.7	84.9	0.2	5.2	1.8	0.8	0.4	0.0	0.0	91.6	0.2	8.2	0.111	0.543	25.615390	-105.003252

2 CARR: Durango - Ent. La Zarca

CLAVE: 10016

RUTA: MEX-045

AÑO: 2025

LUGAR	ESTACION				CLASIFICACION VEHICULAR EN PORCIENTO										COORDENADAS					
	KM	TE	SC	TDPA	M	A	B	C2	C3	T3S2	T3S3	T3S2R4	OTROS	A	B	C	K'	D	LATITUD	LONGITUD
Durango	0.00	3	1	15747	3.7	88.9	1.6	2.3	1.0	1.0	0.4	0.7	0.4	92.6	1.6	5.8	0.078	0.512	24.041547	-104.658017
Durango	0.00	3	2	16663	3.8	89.0	1.4	2.4	1.2	1.0	0.3	0.6	0.3	92.8	1.4	5.8	0.083	0.512	24.041535	-104.658134
Caseta Fiscal Zona Industrial	5.30	1	1	11820	3.0	85.8	1.7	5.7	1.9	1.0	0.5	0.2	0.2	88.8	1.7	9.5	0.096	0.570	24.049342	-104.657965
Caseta Fiscal Zona Industrial	5.30	1	2	11757	3.0	85.8	1.7	5.8	1.9	0.8	0.5	0.2	0.3	88.8	1.7	9.5	0.095	0.570	24.049404	-104.658125
Caseta Fiscal Zona Industrial	5.30	3	1	8974	4.3	86.7	1.5	3.2	1.9	1.1	0.6	0.5	0.2	91.0	1.5	7.5	0.098	0.563	24.059670	-104.656129
Caseta Fiscal Zona Industrial	5.30	3	2	7637	4.2	86.6	1.5	3.2	2.1	1.1	0.6	0.5	0.2	90.8	1.5	7.7	0.113	0.563	24.059691	-104.656270
X. Periférico de Durango	6.20	3	1	5131	4.1	87.8	1.5	2.4	1.7	1.4	0.8	0.3	0.0	91.9	1.5	6.6	0.105	0.511	24.080901	-104.670158
X. Periférico de Durango	6.20	3	2	5401	4.0	87.7	1.5	2.3	1.6	1.7	0.8	0.3	0.1	91.7	1.5	6.8	0.101	0.511	24.080830	-104.670216
T. Der. San José del Molino	28.00																			
El Carmen y Anexas	31.60	1	0	5581	1.4	85.9	3.3	3.6	1.7	2.3	1.6	0.1	0.1	87.3	3.3	9.4	0.093	0.548	24.270825	-104.704258
T. Izq. Canatlán	55.25	1	0	7048	2.5	86.3	2.8	3.2	1.1	1.9	1.4	0.5	0.3	88.8	2.8	8.4	0.074	0.518	24.427382	-104.698675
T. Izq. Canatlán	55.25	3	0	3046	5.1	85.7	2.4	3.4	0.7	1.6	1.0	0.1	0.0	90.8	2.4	6.8	0.067	0.532	24.447082	-104.699157
T. Der. San Juan del Río	105.81	1	0	3004	4.4	83.2	3.1	3.8	1.7	2.2	1.5	0.1	0.0	87.6	3.1	9.3	0.063	0.582	24.790792	-104.506105
T. Der. San Juan del Río	105.81	3	0	2062	3.2	85.6	2.6	3.3	1.8	2.1	1.2	0.2	0.0	88.8	2.6	8.6	0.088	0.586	24.801238	-104.498476
T. Der. Nazas	155.50	3	0	3185	7.0	79.2	2.1	6.2	1.7	1.7	1.1	0.6	0.4	86.2	2.1	11.7	0.090	0.535	25.131201	-104.540793
T. Der. Rodeo	160.70	1	0	3977	2.4	89.9	1.7	1.8	1.4	1.4	1.0	0.2	0.2	92.3	1.7	6.0	0.082	0.511	25.158203	-104.550749
T. Izq. Abasolo	178.00	3	0	1511	3.7	75.5	4.2	8.8	2.0	2.9	2.3	0.4	0.2	79.2	4.2	16.6	0.106	0.531	25.309961	-104.640100
Ent. La Zarca	239.50	1	0	926	1.9	81.3	4.1	3.3	1.4	4.4	2.7	0.4	0.5	83.2	4.1	12.7	0.091	0.500	25.771617	-104.755292

3 CARR: Durango - Mezquital

CLAVE: 10423

RUTA: MEX-023

AÑO: 2025

LUGAR	ESTACION				CLASIFICACION VEHICULAR EN PORCIENTO										COORDENADAS					
	KM	TE	SC	TDPA	M	A	B	C2	C3	T3S2	T3S3	T3S2R4	OTROS	A	B	C	K'	D	LATITUD	LONGITUD
Durango	0.00	3	1	10243	6.1	85.7	1.4	4.9	1.0	0.5	0.1	0.2	0.1	91.8	1.4	6.8	0.102	0.544	23.991304	-104.623738

DURANGO

3 CARR: Durango - Mezquital

CLAVE: 10423

RUTA: MEX-023

AÑO: 2025

LUGAR	ESTACION				CLASIFICACION VEHICULAR EN PORCIENTO										COORDENADAS					
	KM	TE	SC	TDPA	M	A	B	C2	C3	T3S2	T3S3	T3S2R4	OTROS	A	B	C	K'	D	LATITUD	LONGITUD
Durango	0.00	3	2	10321	6.0	85.6	1.5	4.7	1.1	0.4	0.2	0.3	0.2	91.6	1.5	6.9	0.102	0.544	23.991329	-104.623430
Gabino Santillán	8.00	3	1	5437	6.3	82.8	0.7	5.2	2.5	1.1	0.6	0.6	0.2	89.1	0.7	10.2	0.087	0.508	23.980590	-104.591662
Gabino Santillán	8.00	3	2	5342	6.4	83.2	0.9	5.0	2.3	0.9	0.8	0.4	0.1	89.6	0.9	9.5	0.086	0.508	23.980682	-104.591608
T. Izq. Monte Morelos	13.00	3	0	5015	7.1	81.8	0.8	5.0	3.4	1.2	0.3	0.2	0.2	88.9	0.8	10.3	0.108	0.583	23.947978	-104.562613
Pino Suarez	24.20	3	0	2303	5.9	84.6	1.0	6.5	1.1	0.5	0.2	0.2	0.0	90.5	1.0	8.5	0.119	0.569	23.872417	-104.481462
Mezquital	82.00	1	1	1443	9.1	84.0	0.4	3.6	1.9	0.2	0.4	0.3	0.1	93.1	0.4	6.5	0.096	0.507	23.485251	-104.385748
Mezquital	82.00	1	2	1411	9.1	84.4	0.6	3.8	1.5	0.1	0.2	0.2	0.1	93.5	0.6	5.9	0.099	0.507	23.485232	-104.385652

4 CARR: Durango - Torreón

CLAVE: 10085

RUTA: MEX-040

AÑO: 2025

LUGAR	ESTACION				CLASIFICACION VEHICULAR EN PORCIENTO										COORDENADAS					
	KM	TE	SC	TDPA	M	A	B	C2	C3	T3S2	T3S3	T3S2R4	OTROS	A	B	C	K'	D	LATITUD	LONGITUD
Durango	0.00	3	1	10538	5.2	85.3	2.2	4.0	1.1	1.0	0.6	0.5	0.1	90.5	2.2	7.3	0.076	0.561	24.077702	-104.590102
Durango	0.00	3	2	10376	5.0	85.1	2.1	4.2	1.3	1.0	0.6	0.5	0.2	90.1	2.1	7.8	0.073	0.561	24.077459	-104.590500
T. Der. Cd. de Los Niños	7.70	3	1	7706	4.3	86.0	2.3	4.1	1.1	1.5	0.4	0.2	0.1	90.3	2.3	7.4	0.079	0.502	24.082114	-104.586301
T. Der. Cd. de Los Niños	7.70	3	2	7824	4.2	86.1	2.2	4.2	1.1	1.5	0.4	0.2	0.1	90.3	2.2	7.5	0.080	0.502	24.082208	-104.586436
X. Periférico de Durango	9.00	1	1	8599	3.9	86.0	1.9	4.5	2.1	0.9	0.3	0.2	0.2	89.9	1.9	8.2	0.073	0.573	24.088258	-104.581078
X. Periférico de Durango	9.00	1	2	8978	3.9	86.2	2.0	4.4	2.2	0.5	0.4	0.2	0.2	90.1	2.0	7.9	0.075	0.573	24.088499	-104.581044
T. Der. Aeropuerto	9.42	1	1	8731	3.7	85.9	2.1	3.8	1.3	1.8	0.6	0.5	0.3	89.6	2.1	8.3	0.081	0.544	24.092483	-104.577442
T. Der. Aeropuerto	9.42	1	2	9111	3.9	86.6	1.8	3.8	1.3	1.6	0.4	0.3	0.3	90.5	1.8	7.7	0.091	0.544	24.092574	-104.577557
T. Der. Aeropuerto	9.42	3	1	4617	7.5	80.5	2.6	4.1	1.1	2.1	0.9	0.6	0.6	88.0	2.6	9.4	0.089	0.534	24.098609	-104.576102
T. Der. Aeropuerto	9.42	3	2	4519	7.6	80.8	2.7	3.9	1.1	1.9	0.8	0.6	0.6	88.4	2.7	8.9	0.096	0.534	24.098653	-104.576206
La Calera	10.85	3	0	5503	3.7	80.8	3.1	5.9	1.0	3.5	1.5	0.4	0.1	84.5	3.1	12.4	0.084	0.509	24.111254	-104.571811
Abraham González	27.10	3	0	3556	2.1	79.4	2.9	5.1	1.2	5.9	2.6	0.7	0.1	81.5	2.9	15.6	0.075	0.560	24.201452	-104.524741
Francisco I. Madero	56.30	1	0	3546	3.1	76.3	2.9	5.4	1.4	5.9	3.5	1.2	0.3	79.4	2.9	17.7	0.081	0.542	24.391978	-104.331675
Francisco I. Madero	56.30	3	0	3767	2.8	77.6	3.1	5.0	1.5	6.3	2.7	0.9	0.1	80.4	3.1	16.5	0.085	0.506	24.405139	-104.306019
Guadalupe Victoria	77.50	1	0	5492	2.6	78.7	3.6	4.8	1.2	4.7	3.1	1.0	0.3	81.3	3.6	15.1	0.078	0.567	24.446789	-104.139629
Guadalupe Victoria	77.50	3	0	6553	3.6	79.7	2.5	5.8	2.2	3.9	1.1	1.1	0.1	83.3	2.5	14.2	0.080	0.526	24.452919	-104.104094
T. Der. Ignacio Allende	90.13	1	0	4288	2.3	79.3	2.5	2.8	1.3	6.6	4.0	1.1	0.1	81.6	2.5	15.9	0.078	0.547	24.494784	-104.028637
T. Der. Ignacio Allende	90.13	3	0	3118	2.2	73.8	3.5	4.4	1.1	9.6	4.2	1.0	0.2	76.0	3.5	20.5	0.072	0.522	24.507239	-104.010721
T. Izq. Peñón Blanco	120.90	1	0	2450	3.4	64.6	4.1	4.9	2.0	10.7	8.9	1.1	0.3	68.0	4.1	27.9	0.085	0.555	24.733990	-103.842815
T. Izq. Peñón Blanco	120.90	3	0	2120	4.2	63.2	4.1	4.6	1.9	13.3	6.4	2.0	0.3	67.4	4.1	28.5	0.087	0.603	24.742930	-103.837670
Cuencamé	144.30	1	0	1569	6.2	80.5	3.4	3.3	2.2	2.0	2.1	0.2	0.1	86.7	3.4	9.9	0.078	0.610	24.861284	-103.701287
Cuencamé	144.30	3	1	5455	4.1	50.0	4.8	11.3	3.9	15.8	4.8	4.5	0.8	54.1	4.8	41.1	0.095	0.622	24.878145	-103.698960
Cuencamé	144.30	3	2	5367	4.1	50.3	4.7	11.1	4.0	15.8	4.8	4.5	0.7	54.4	4.7	40.9	0.092	0.622	24.878148	-103.699032

DURANGO

4 CARR: Durango - Torreón

CLAVE: 10085

RUTA: MEX-040

AÑO: 2025

LUGAR	ESTACION				CLASIFICACION VEHICULAR EN PORCIENTO										COORDENADAS					
	KM	TE	SC	TDPA	M	A	B	C2	C3	T3S2	T3S3	T3S2R4	OTROS	A	B	C	K'	D	LATITUD	LONGITUD
T. C. Libramiento Exterior Cuencamé	148.70	1	0	2365	5.2	70.8	3.9	10.8	3.3	2.6	2.2	1.0	0.2	76.0	3.9	20.1	0.079	0.532	24.894245	-103.701866
X. C. Yerbanís - Gómez Palicio (Cuota)	157.80	1	0	8015	1.9	45.0	2.5	7.6	3.3	25.6	6.7	6.4	1.0	46.9	2.5	50.6	0.061	0.523	24.971174	-103.731709
T. Izq. Nazas	171.61	1	0	4066	2.6	58.3	5.6	4.9	4.1	15.4	6.4	2.2	0.5	60.9	5.6	33.5	0.085	0.587	25.086421	-103.771118
T. Izq. Nazas	171.61	3	0	5749	3.0	63.3	3.9	6.0	4.6	10.2	3.6	4.5	0.9	66.3	3.9	29.8	0.071	0.515	25.091766	-103.769785
T. Der. Villa Juárez	194.40	3	0	7472	3.2	60.2	3.0	6.9	4.1	14.5	5.0	2.2	0.9	63.4	3.0	33.6	0.075	0.589	25.226355	-103.627609
León Guzmán	229.58	3	0	10850	7.2	70.6	2.6	5.6	2.1	6.9	2.8	1.7	0.5	77.8	2.6	19.6	0.060	0.509	25.508695	-103.650514
Cd. Lerdo	244.80	1	1	7574	3.6	75.8	3.2	4.6	3.3	5.2	2.0	1.5	0.8	79.4	3.2	17.4	0.078	0.524	25.511913	-103.541966
Cd. Lerdo	244.80	1	2	7803	3.8	76.4	3.0	4.5	3.2	4.5	2.3	1.6	0.7	80.2	3.0	16.8	0.085	0.524	25.512022	-103.541958
T. Izq. Gómez Palacio	248.90	3	1	26072	9.7	84.9	0.6	1.9	0.8	0.6	0.3	0.6	0.6	94.6	0.6	4.8	0.072	0.580	25.550681	-103.480773
T. Izq. Gómez Palacio	248.90	3	2	27139	9.6	84.7	0.7	2.1	1.0	0.6	0.3	0.7	0.3	94.3	0.7	5.0	0.079	0.580	25.550819	-103.480732
Lim. Edos. Term. Dgo. Ppia. Coah.	251.00																			
Torreón	255.80	1	1	20675	6.7	84.9	1.8	4.5	0.3	0.5	0.3	0.8	0.2	91.6	1.8	6.6	0.070	0.501	25.548174	-103.471823
Torreón	255.80	1	2	20104	6.8	84.9	1.7	4.5	0.4	0.5	0.2	0.8	0.2	91.7	1.7	6.6	0.067	0.501	25.548252	-103.471704

5 CARR: Durango - Villa Unión

CLAVE: 0083

RUTA: MEX-040

AÑO: 2025

LUGAR	ESTACION				CLASIFICACION VEHICULAR EN PORCIENTO										COORDENADAS					
	KM	TE	SC	TDPA	M	A	B	C2	C3	T3S2	T3S3	T3S2R4	OTROS	A	B	C	K'	D	LATITUD	LONGITUD
Durango	0.00	3	0	3886	6.8	75.4	2.3	4.5	2.8	4.8	2.8	0.5	0.1	82.2	2.3	15.5	0.103	0.550	23.995145	-104.732744
T. Der. Pino	22.86	3	0	2064	5.6	76.1	2.7	3.7	3.1	5.5	3.0	0.2	0.1	81.7	2.7	15.6	0.102	0.697	23.967248	-104.820317
T. Izq. Estación Navíos	58.42	3	0	2144	5.6	75.0	2.4	3.8	3.7	5.0	2.6	1.6	0.3	80.6	2.4	17.0	0.095	0.574	23.896765	-105.051124
Llano Grande	77.23	1	0	1885	9.0	71.5	2.7	4.5	3.2	5.0	3.2	0.7	0.2	80.5	2.7	16.8	0.116	0.734	23.866650	-105.199261
El Salto	99.76	1	0	2556	8.6	80.8	1.6	3.7	2.6	1.3	0.9	0.4	0.1	89.4	1.6	9.0	0.092	0.513	23.805450	-105.338377
El Salto	99.76	3	0	1999	6.9	83.9	1.4	3.8	2.1	0.9	0.3	0.6	0.1	90.8	1.4	7.8	0.091	0.577	23.784340	-105.375996
Las Adjuntas	119.00	1	0	1687	4.4	76.9	3.4	9.1	2.3	1.8	1.6	0.4	0.1	81.3	3.4	15.3	0.110	0.551	23.725118	-105.491263
La Ciudad	145.50	1	0	1325	11.5	78.0	1.7	5.3	1.8	1.0	0.3	0.3	0.1	89.5	1.7	8.8	0.109	0.510	23.731788	-105.674620
La Ciudad	145.50	3	0	665	35.0	56.2	1.6	3.3	2.2	0.9	0.4	0.4	0.0	91.2	1.6	7.2	0.108	0.569	23.727247	-105.691805
Lim. Edos. Term. Dgo. Ppia. Sin.	198.50																			
Concordia	273.50	1	0	1728	15.3	67.7	2.9	2.8	3.6	3.7	3.6	0.4	0.0	83.0	2.9	14.1	0.108	0.524	23.292790	-106.051904
T. C. Tepic - Mazatlán	294.40	1	0	4121	9.0	76.7	4.0	3.7	2.0	2.7	1.4	0.4	0.1	85.7	4.0	10.3	0.076	0.502	23.204792	-106.197832

DURANGO

6 CARR: Ent. La Chicharrona - Cuencamé

CLAVE: 00152

RUTA: MEX-049

AÑO: 2025

LUGAR	ESTACION				CLASIFICACION VEHICULAR EN PORCIENTO										COORDENADAS					
	KM	TE	SC	TDPA	M	A	B	C2	C3	T3S2	T3S3	T3S2R4	OTROS	A	B	C	K'	D	LATITUD	LONGITUD
Ent. La Chicharrona	0.00	3	1	4875	2.2	53.6	6.0	12.5	3.2	14.3	3.4	4.2	0.6	55.8	6.0	38.2	0.082	0.534	23.307663	-102.958721
Ent. La Chicharrona	0.00	3	2	5096	1.9	52.3	6.4	12.4	3.7	13.7	3.9	4.9	0.8	54.2	6.4	39.4	0.072	0.534	23.307672	-102.958911
T. Der. Cañitas de Felipe Pescador	25.86	1	1	3704	2.2	55.4	6.4	11.9	3.3	13.9	3.8	2.7	0.4	57.6	6.4	36.0	0.090	0.513	23.506166	-102.959482
T. Der. Cañitas de Felipe Pescador	25.86	1	2	3509	1.9	55.3	6.5	12.3	3.6	13.6	3.8	2.7	0.3	57.2	6.5	36.3	0.083	0.513	23.506162	-102.959679
T. Libramiento de Río Grande Sur	57.00																			
Río Grande	60.00	1	0	8025	2.7	52.6	5.6	12.2	2.7	15.6	4.1	3.7	0.8	55.3	5.6	39.1	0.086	0.520	23.788077	-103.015239
Río Grande	60.00	3	0	6609	3.5	45.7	6.4	16.6	4.3	15.2	4.2	3.3	0.8	49.2	6.4	44.4	0.073	0.547	23.882000	-103.099187
T. Libramiento de Río Grande Norte	67.40																			
T. Der. Nieves	78.00	3	0	6974	3.4	46.6	6.7	17.7	3.7	13.8	5.0	2.5	0.6	50.0	6.7	43.3	0.069	0.509	23.923575	-103.159828
X. C. Juan Aldama - Miguel Auza	124.50	1	0	6528	2.9	45.0	7.6	15.4	3.5	17.4	4.3	3.0	0.9	47.9	7.6	44.5	0.076	0.509	24.268483	-103.398592
X. C. Juan Aldama - Miguel Auza	124.50	3	0	6870	3.6	51.4	5.5	11.0	2.9	14.8	5.7	4.2	0.9	55.0	5.5	39.5	0.071	0.559	24.289710	-103.407425
T. Izq. Miguel Auza	131.20	3	0	6570	3.6	47.4	5.7	15.0	3.5	14.4	5.8	3.7	0.9	51.0	5.7	43.3	0.064	0.515	24.336693	-103.423646
Lim. Edos. Term. Zac. Ppia. Dgo.	134.30																			
T. Der. Santa Clara	144.00	1	0	6275	4.5	38.5	7.6	5.1	3.3	25.5	6.0	8.7	0.8	43.0	7.6	49.4	0.061	0.520	24.435886	-103.486243
T. Der. Santa Clara	144.00	3	0	5179	4.4	37.8	9.2	7.0	3.1	23.7	5.8	8.2	0.8	42.2	9.2	48.6	0.067	0.507	24.445036	-103.492219
T. C. Libramiento Exterior Cuencamé	196.10	1	0	5622	4.7	36.7	5.7	8.8	2.5	27.2	5.4	8.0	1.0	41.4	5.7	52.9	0.070	0.551	24.828058	-103.682337
Cuencamé	199.10	1	0	1387	8.0	77.5	2.5	4.9	3.1	1.8	1.2	0.9	0.1	85.5	2.5	12.0	0.078	0.630	24.852735	-103.693103

7 CARR: Ent. La Zarca - Hidalgo del Parral

CLAVE: 00488

RUTA: MEX-045

AÑO: 2025

LUGAR	ESTACION				CLASIFICACION VEHICULAR EN PORCIENTO										COORDENADAS					
	KM	TE	SC	TDPA	M	A	B	C2	C3	T3S2	T3S3	T3S2R4	OTROS	A	B	C	K'	D	LATITUD	LONGITUD
Ent. La Zarca	238.60	3	0	1429	3.1	78.9	2.2	4.2	3.5	3.7	2.8	1.1	0.5	82.0	2.2	15.8	0.081	0.526	25.786736	-104.766398
T. Der. Ceballos	284.75	1	0	1604	1.5	79.6	4.2	4.1	2.3	4.3	2.9	0.7	0.4	81.1	4.2	14.7	0.095	0.539	26.135195	-105.025191
T. Der. Ceballos	284.75	3	0	1917	1.1	86.1	3.2	3.3	0.8	3.1	2.0	0.3	0.1	87.2	3.2	9.6	0.078	0.507	26.142323	-105.030528
T. Izq. Canutillo	329.27	3	0	1508	2.2	82.9	3.8	4.0	1.5	3.1	2.0	0.4	0.1	85.1	3.8	11.1	0.097	0.623	26.389612	-105.353597
Las Nieves	334.80	3	0	2010	4.1	79.0	3.5	4.4	2.6	3.1	2.1	0.7	0.5	83.1	3.5	13.4	0.099	0.535	26.400069	-105.405602
T. Izq. Ocampo	346.90	3	0	1601	4.8	78.4	3.2	5.1	2.1	3.0	2.3	0.7	0.4	83.2	3.2	13.6	0.078	0.504	26.446617	-105.494959
Lim. Edos. Term. Dgo. Ppia. Chih.	360.57																			
Matamoros	386.00	1	0	1537	3.0	79.2	3.4	4.8	2.3	3.5	3.2	0.5	0.1	82.2	3.4	14.4	0.079	0.590	26.742973	-105.579010
Hidalgo del Parral	408.10	1	0	4226	3.3	86.5	1.7	3.5	1.5	1.5	1.1	0.7	0.2	89.8	1.7	8.5	0.076	0.516	26.917882	-105.640756

DURANGO

8 CARR: Ent. Los Herrera - Topia

CLAVE: 10090

RUTA: MEX-036

AÑO: 2025

LUGAR	ESTACION				CLASIFICACION VEHICULAR EN PORCIENTO										COORDENADAS					
	KM	TE	SC	TDPA	M	A	B	C2	C3	T3S2	T3S3	T3S2R4	OTROS	A	B	C	K'	D	LATITUD	LONGITUD
T. C. Guadalupe Aguilera - Tepehuanes	0.00	3	0	656	4.3	75.7	2.0	4.9	4.5	4.3	2.9	0.4	1.0	80.0	2.0	18.0	0.084	0.545	25.121821	-105.481294
Los Altares	80.00	1	0	633	8.8	73.8	2.0	4.8	4.5	3.1	2.2	0.5	0.3	82.6	2.0	15.4	0.104	0.591	25.017290	-105.897114
Topia	229.00																			

9 CARR: Gómez Palacio - Jiménez

CLAVE: 00006

RUTA: MEX-049

AÑO: 2025

LUGAR	ESTACION				CLASIFICACION VEHICULAR EN PORCIENTO										COORDENADAS					
	KM	TE	SC	TDPA	M	A	B	C2	C3	T3S2	T3S3	T3S2R4	OTROS	A	B	C	K'	D	LATITUD	LONGITUD
Gómez Palacio	0.00	3	1	17471	5.9	77.9	2.6	3.3	1.9	4.4	1.5	2.0	0.5	83.8	2.6	13.6	0.091	0.529	25.614826	-103.513588
Gómez Palacio	0.00	3	2	18091	5.7	76.7	2.8	3.5	2.0	4.8	1.6	2.4	0.5	82.4	2.8	14.8	0.078	0.529	25.614911	-103.513785
X. C. Libramiento Norte de Torreón (Cuota)	7.92																			
X. C. La Torreña - Brittingham	10.96	1	1	12092	8.9	64.0	3.8	4.5	2.6	8.5	2.4	4.3	1.0	72.9	3.8	23.3	0.073	0.571	25.632596	-103.520736
X. C. La Torreña - Brittingham	10.96	1	2	12112	8.7	65.4	3.9	4.3	2.7	8.6	2.0	3.6	0.8	74.1	3.9	22.0	0.087	0.571	25.632560	-103.520858
T. Izq. Dinamita	26.27	1	1	7231	5.1	57.7	6.8	4.9	1.8	15.6	3.4	3.6	1.1	62.8	6.8	30.4	0.076	0.575	25.747804	-103.566595
T. Izq. Dinamita	26.27	1	2	7394	5.2	57.8	6.6	5.0	1.7	15.9	3.3	3.5	1.0	63.0	6.6	30.4	0.095	0.575	25.747769	-103.566792
T. C. Gómez Palacio - Corralitos (Cuota)	37.92	1	1	6160	4.2	53.9	6.5	4.8	2.5	18.5	4.0	4.5	1.1	58.1	6.5	35.4	0.066	0.506	25.861681	-103.610332
T. C. Gómez Palacio - Corralitos (Cuota)	37.92	1	2	6325	4.4	53.4	6.5	5.2	2.5	18.7	4.0	4.3	1.0	57.8	6.5	35.7	0.066	0.506	25.861613	-103.610518
Bermejillo	39.30	1	1	3352	13.9	60.0	4.9	5.4	2.5	8.4	2.6	1.9	0.4	73.9	4.9	21.2	0.081	0.537	25.878523	-103.618376
Bermejillo	39.30	1	2	3767	13.7	59.9	4.9	5.1	2.5	8.8	2.6	2.0	0.5	73.6	4.9	21.5	0.088	0.537	25.878490	-103.618460
T. Izq. Ent. La Zarca	40.89	3	0	2471	5.2	42.3	5.5	10.8	4.5	24.1	4.8	1.9	0.9	47.5	5.5	47.0	0.090	0.527	25.902983	-103.628302
Yermo	107.95	1	0	1825	5.2	39.7	4.1	10.9	4.1	24.3	7.8	3.4	0.5	44.9	4.1	51.0	0.063	0.504	26.382677	-103.998054
Yermo	107.95	3	0	1718	5.7	51.8	4.1	9.0	4.1	18.8	4.3	2.1	0.1	57.5	4.1	38.4	0.078	0.500	26.395410	-104.009913
Ceballos	127.20	1	0	1772	3.5	42.7	4.5	5.9	3.4	29.3	7.9	2.4	0.4	46.2	4.5	49.3	0.069	0.516	26.516764	-104.120415
Ceballos	127.20	3	0	1586	6.8	39.5	6.2	7.9	2.2	25.4	7.2	4.3	0.5	46.3	6.2	47.5	0.084	0.541	26.536641	-104.139046
Lim. Edos. Term. Dgo. Ppia. Chih.	146.15																			
Estación Escalón	160.89	3	0	2129	4.6	28.4	5.9	6.4	3.3	39.2	7.9	3.8	0.5	33.0	5.9	61.1	0.072	0.617	26.756205	-104.341458
T. C. Gómez Palacio - Corralitos (Cuota)	168.81																			
Jiménez	223.00	1	1	4422	6.5	44.7	7.5	4.5	2.1	22.7	5.1	5.8	1.1	51.2	7.5	41.3	0.100	0.568	27.117694	-104.890967
Jiménez	223.00	1	2	4351	6.3	45.5	7.6	4.3	1.8	22.8	4.9	5.8	1.0	51.8	7.6	40.6	0.077	0.568	27.117534	-104.890923

10 CARR: Gómez Palacio - La Unión

CLAVE: 10009

RUTA: MEX-040

AÑO: 2025

LUGAR	ESTACION				CLASIFICACION VEHICULAR EN PORCIENTO										COORDENADAS					
	KM	TE	SC	TDPA	M	A	B	C2	C3	T3S2	T3S3	T3S2R4	OTROS	A	B	C	K'	D	LATITUD	LONGITUD
Gómez Palacio	0.00	3	0	6036	8.8	83.7	1.2	3.5	1.5	0.6	0.3	0.3	0.1	92.5	1.2	6.3	0.085	0.533	25.529172	-103.494163

DURANGO

10 CARR: Gómez Palacio - La Unión

CLAVE: 10009

RUTA: MEX-040

AÑO: 2025

LUGAR	ESTACION				CLASIFICACION VEHICULAR EN PORCIENTO													COORDENADAS		
	KM	TE	SC	TDPA	M	A	B	C2	C3	T3S2	T3S3	T3S2R4	OTROS	A	B	C	K'	D	LATITUD	LONGITUD
X. C. Torreón - Villa Juárez	4.30	3	0	6059	10.5	78.1	1.8	6.0	1.6	1.0	0.1	0.8	0.1	88.6	1.8	9.6	0.084	0.538	25.517364	-103.487110
Nazareno	20.90	1	0	2631	7.4	79.0	2.2	7.8	1.9	0.9	0.6	0.2	0.0	86.4	2.2	11.4	0.088	0.720	25.422342	-103.428914
Nazareno	20.90	3	0	2004	5.6	80.4	1.9	5.5	2.6	2.2	0.9	0.7	0.2	86.0	1.9	12.1	0.099	0.525	25.398363	-103.440412
La Unión	42.20	1	0	633	6.7	80.5	1.1	5.6	3.1	1.2	1.0	0.8	0.0	87.2	1.1	11.7	0.098	0.548	25.292549	-103.511133

11 CARR: Gómez Palacio - Tlahualillo de Zaragoza

CLAVE: 10005

RUTA: MEX-040

AÑO: 2025

LUGAR	ESTACION				CLASIFICACION VEHICULAR EN PORCIENTO													COORDENADAS		
	KM	TE	SC	TDPA	M	A	B	C2	C3	T3S2	T3S3	T3S2R4	OTROS	A	B	C	K'	D	LATITUD	LONGITUD
T. C. Gómez Palacio - Jiménez	0.00																			
T. Izq. Esmeralda	5.60	1	0	20321	8.3	81.3	1.6	3.5	2.1	1.4	0.4	1.1	0.3	89.6	1.6	8.8	0.082	0.556	25.607052	-103.465082
T. Izq. Esmeralda	5.60	3	1	5813	6.6	81.3	1.0	4.2	2.1	2.4	0.9	1.2	0.3	87.9	1.0	11.1	0.088	0.565	25.618250	-103.453660
T. Izq. Esmeralda	5.60	3	2	5776	6.2	80.6	1.3	4.6	2.5	2.4	1.0	1.0	0.4	86.8	1.3	11.9	0.107	0.565	25.618302	-103.453720
Gregorio García	26.00	3	0	6178	7.3	74.9	2.4	7.1	3.0	2.5	1.2	1.4	0.2	82.2	2.4	15.4	0.090	0.524	25.767457	-103.351894
T. Izq. Esmeralda	31.44	1	0	8285	9.8	70.0	1.8	10.5	2.4	2.5	1.0	1.6	0.4	79.8	1.8	18.4	0.088	0.505	25.799686	-103.352747
San Francisco	48.90	1	0	2962	11.1	74.4	2.1	7.9	2.1	1.6	0.5	0.3	0.0	85.5	2.1	12.4	0.071	0.512	25.928504	-103.416579
San Francisco	48.90	3	0	1547	10.6	73.5	2.0	8.4	2.9	1.5	0.7	0.3	0.1	84.1	2.0	13.9	0.074	0.530	25.955745	-103.425022
Tlahualillo de Zaragoza	72.90	1	0	2466	9.5	78.9	2.0	6.6	1.1	0.9	0.5	0.3	0.2	88.4	2.0	9.6	0.079	0.564	26.109398	-103.422353

12 CARR: Gregorio García - Francisco I. Madero

CLAVE: 00110

RUTA: MEX-040

AÑO: 2025

LUGAR	ESTACION				CLASIFICACION VEHICULAR EN PORCIENTO													COORDENADAS		
	KM	TE	SC	TDPA	M	A	B	C2	C3	T3S2	T3S3	T3S2R4	OTROS	A	B	C	K'	D	LATITUD	LONGITUD
T. C. Gómez Palacio - Tlahualillo de Zaragoza	0.00																			
Lim. Edos. Term. Dgo. Ppia. Coah.	3.60																			
Francisco I. Madero	9.60	1	0	10413	7.5	82.6	2.5	3.8	1.1	1.5	0.6	0.3	0.1	90.1	2.5	7.4	0.089	0.512	25.772267	-103.297118

13 CARR: Guadalupe Aguilera - Guanaceví

CLAVE: 10220

RUTA: MEX-023

AÑO: 2025

LUGAR	ESTACION				CLASIFICACION VEHICULAR EN PORCIENTO													COORDENADAS		
	KM	TE	SC	TDPA	M	A	B	C2	C3	T3S2	T3S3	T3S2R4	OTROS	A	B	C	K'	D	LATITUD	LONGITUD
Guadalupe Aguilera	0.00	3	1	4208	4.8	86.4	1.5	2.1	1.2	1.8	1.2	0.6	0.4	91.2	1.5	7.3	0.070	0.519	24.464422	-104.713363
Guadalupe Aguilera	0.00	3	2	4050	4.9	86.3	1.4	2.1	1.4	1.8	1.2	0.5	0.4	91.2	1.4	7.4	0.074	0.519	24.464448	-104.713438
Canatlán	14.00	3	0	3316	2.8	87.9	1.8	2.9	1.0	2.1	1.2	0.2	0.1	90.7	1.8	7.5	0.084	0.563	24.546077	-104.775757
La Soledad	45.80	3	0	3620	2.2	85.8	3.1	3.5	1.2	2.2	1.8	0.2	0.0	88.0	3.1	8.9	0.083	0.609	24.773074	-104.933057

DURANGO

13 CARR: Guadalupe Aguilera - Guanaceví

CLAVE: 10220

RUTA: MEX-023

AÑO: 2025

LUGAR	ESTACION				CLASIFICACION VEHICULAR EN PORCIENTO										COORDENADAS					
	KM	TE	SC	TDPA	M	A	B	C2	C3	T3S2	T3S3	T3S2R4	OTROS	A	B	C	K'	D	LATITUD	LONGITUD
T. Der. Coneto de Comonfort	51.60	1	0	3100	2.3	83.4	3.3	3.6	1.8	3.1	2.2	0.3	0.0	85.7	3.3	11.0	0.092	0.629	24.802860	-104.924466
José María Morelos	90.20	1	0	2941	2.8	86.9	2.3	3.6	1.7	1.3	1.1	0.3	0.0	89.7	2.3	8.0	0.097	0.521	25.008165	-105.203173
Santiago Papasquiaro	117.00	3	0	4750	4.4	84.8	1.2	3.6	2.6	1.4	1.0	0.8	0.2	89.2	1.2	9.6	0.098	0.534	25.078032	-105.431137
Las Herreras	133.00	3	0	1355	3.1	85.5	3.0	4.1	2.2	1.2	0.7	0.2	0.0	88.6	3.0	8.4	0.094	0.508	25.160068	-105.512161
Tepehuanes	169.00	1	0	1633	6.2	78.4	2.6	4.7	3.9	2.1	0.8	0.7	0.6	84.6	2.6	12.8	0.091	0.503	25.322407	-105.714567
T. Der. Santa María del Oro	209.15	1	0	282	2.9	87.1	2.2	4.7	1.4	0.9	0.6	0.2	0.0	90.0	2.2	7.8	0.124	0.514	25.617709	-105.745250
T. Der. Santa María del Oro	209.15	3	0	363	3.4	83.3	4.0	5.9	1.3	0.7	1.0	0.4	0.0	86.7	4.0	9.3	0.116	0.571	25.623251	-105.745614
Guanaceví	255.80																			

14 CARR: Hidalgo del Parral - Guadalupe y Calvo

CLAVE: 00802

RUTA: MEX-024

AÑO: 2025

LUGAR	ESTACION				CLASIFICACION VEHICULAR EN PORCIENTO										COORDENADAS					
	KM	TE	SC	TDPA	M	A	B	C2	C3	T3S2	T3S3	T3S2R4	OTROS	A	B	C	K'	D	LATITUD	LONGITUD
T. C. Hidalgo del Parral - Santa Bárbara	0.00	3	0	3088	3.4	83.0	1.6	2.7	4.1	2.2	1.3	0.9	0.8	86.4	1.6	12.0	0.078	0.515	26.915494	-105.764781
T. Der. Guacho chic	35.00	1	0	1108	3.4	69.4	5.3	7.8	6.3	3.4	2.4	1.4	0.6	72.8	5.3	21.9	0.087	0.625	26.816210	-106.015332
T. Der. Guacho chic	35.00	3	0	908	5.1	72.1	3.0	6.5	4.9	4.9	1.8	0.9	0.8	77.2	3.0	19.8	0.094	0.529	26.810703	-106.015939
Lim. Edos. Term. Chih. Ppia. Dgo	38.00																			
Lim. Edos. Term. Dgo. Ppia. Chih.	57.00																			
El Vergel	110.00	1	0	1040	6.2	75.5	1.8	9.8	3.3	1.7	0.7	0.2	0.8	81.7	1.8	16.5	0.092	0.521	26.523082	-106.357173
Puerto Sabinas	212.00	1	0	886	3.9	74.8	2.2	7.7	5.8	4.0	1.3	0.2	0.1	78.7	2.2	19.1	0.100	0.584	26.451647	-106.386581
Guadalupe y Calvo	234.00																			

15 CARR: Libramiento Exterior Cuencamé

CLAVE: 10006

RUTA: MEX-049

AÑO: 2025

LUGAR	ESTACION				CLASIFICACION VEHICULAR EN PORCIENTO										COORDENADAS					
	KM	TE	SC	TDPA	M	A	B	C2	C3	T3S2	T3S3	T3S2R4	OTROS	A	B	C	K'	D	LATITUD	LONGITUD
Ent. La Chicharrona - Cuencamé	0.00	3	0	5484	4.1	33.5	9.5	5.5	3.1	29.4	5.9	8.0	1.0	37.6	9.5	52.9	0.065	0.535	24.843636	-103.695138
T. C. Durango - Torreón	7.65	1	0	5748	4.6	32.7	9.8	5.8	3.0	28.2	7.3	7.7	0.9	37.3	9.8	52.9	0.066	0.589	24.894698	-103.706882

16 CARR: Libramiento Nombre de Dios

CLAVE:

RUTA: MEX-045

AÑO: 2025

LUGAR	ESTACION				CLASIFICACION VEHICULAR EN PORCIENTO										COORDENADAS					
	KM	TE	SC	TDPA	M	A	B	C2	C3	T3S2	T3S3	T3S2R4	OTROS	A	B	C	K'	D	LATITUD	LONGITUD
T. C. Zacatecas - Durango Este	232.74	3	0	4616	2.1	76.1	4.3	4.7	1.4	6.5	1.8	2.5	0.6	78.2	4.3	17.5	0.083	0.503	23.850073	-104.224104
T. C. Zacatecas - Durango Oeste	238.04																			

DURANGO

17 CARR: Libramiento Oriente de Durango

CLAVE:

RUTA: MEX-045

AÑO: 2025

LUGAR	ESTACION				CLASIFICACION VEHICULAR EN PORCIENTO													COORDENADAS		
	KM	TE	SC	TDPA	M	A	B	C2	C3	T3S2	T3S3	T3S2R4	OTROS	A	B	C	K'	D	LATITUD	LONGITUD
T. C. Zacatecas - Durango	0.00	3	1	3325	3.6	73.2	3.7	5.0	2.9	6.2	2.6	2.2	0.6	76.8	3.7	19.5	0.076	0.537	24.022527	-104.519359
T. C. Zacatecas - Durango	0.00	3	2	3302	3.5	72.6	3.9	5.2	3.3	6.1	2.5	2.3	0.6	76.1	3.9	20.0	0.083	0.537	24.022625	-104.519439
T. C. Durango - Ent. La Zarca	10.50	1	1	2850	2.6	77.0	2.7	4.4	2.7	6.2	2.3	1.7	0.4	79.6	2.7	17.7	0.091	0.516	24.082729	-104.557994
T. C. Durango - Ent. La Zarca	10.50	1	2	2977	2.6	77.2	2.5	4.3	2.7	6.0	2.3	2.0	0.4	79.8	2.5	17.7	0.092	0.516	24.082528	-104.558175

18 CARR: Libramiento Sur de Durango

CLAVE:

RUTA: MEX-045

AÑO: 2025

LUGAR	ESTACION				CLASIFICACION VEHICULAR EN PORCIENTO													COORDENADAS		
	KM	TE	SC	TDPA	M	A	B	C2	C3	T3S2	T3S3	T3S2R4	OTROS	A	B	C	K'	D	LATITUD	LONGITUD
T. C. Zacatecas - Durango	0.00	3	0	3966	4.0	83.0	1.5	3.9	2.0	2.9	1.7	0.9	0.1	87.0	1.5	11.5	0.086	0.581	24.007027	-104.529678
T. C. Durango - Mezquital	8.45	1	0	4197	3.1	83.0	1.4	4.8	1.9	3.0	1.5	1.0	0.3	86.1	1.4	12.5	0.084	0.510	23.970859	-104.569106
T. C. Durango - Mezquital	8.45	3	0	2252	5.8	76.2	1.5	5.4	5.9	2.3	0.8	1.7	0.4	82.0	1.5	16.5	0.083	0.580	23.966198	-104.578134
T. C. Durango - Aserradero La Flor	19.50	1	0	1760	6.6	74.2	2.7	5.7	3.1	3.8	2.1	1.6	0.2	80.8	2.7	16.5	0.080	0.636	23.952493	-104.662484
T. C. Durango - Aserradero La Flor	19.50	3	0	2304	8.2	77.4	2.0	4.1	3.4	2.4	0.9	1.5	0.1	85.6	2.0	12.4	0.092	0.563	23.952878	-104.671299
T. C. Durango - Villa Unión	27.70	1	0	4474	3.4	86.6	1.0	2.5	2.8	2.3	0.6	0.7	0.1	90.0	1.0	9.0	0.091	0.547	23.992749	-104.721512
Libramiento de Durango Cuota	29.20	1	0	4699	4.6	79.1	2.0	2.7	3.6	4.6	1.9	1.4	0.1	83.7	2.0	14.3	0.088	0.527	24.001773	-104.725825

19 CARR: Paso por Chupaderos

CLAVE:

RUTA: MEX-045

AÑO: 2025

LUGAR	ESTACION				CLASIFICACION VEHICULAR EN PORCIENTO													COORDENADAS		
	KM	TE	SC	TDPA	M	A	B	C2	C3	T3S2	T3S3	T3S2R4	OTROS	A	B	C	K'	D	LATITUD	LONGITUD
T. C. Durango - Ent. La Zarca Sur	0.00	3	0	795	2.0	76.7	4.4	15.9	0.9	0.1	0.0	0.0	0.0	78.7	4.4	16.9	0.087	0.551	24.112784	-104.704505
T. C. Durango - Ent. La Zarca Norte	2.95																			

20 CARR: Pedriceña - Ent. Rodeo

CLAVE: 10002

RUTA: MEX-034

AÑO: 2025

LUGAR	ESTACION				CLASIFICACION VEHICULAR EN PORCIENTO													COORDENADAS		
	KM	TE	SC	TDPA	M	A	B	C2	C3	T3S2	T3S3	T3S2R4	OTROS	A	B	C	K'	D	LATITUD	LONGITUD
T. C. Durango - Torreón	0.00	3	0	2760	2.9	78.6	1.7	11.1	2.4	1.7	1.0	0.4	0.2	81.5	1.7	16.8	0.088	0.580	25.092675	-103.774950
Nazas	45.00	1	0	2209	6.1	79.7	1.1	8.6	2.4	1.4	0.4	0.2	0.1	85.8	1.1	13.1	0.085	0.622	25.239047	-104.094975
Nazas	45.00	3	0	1097	9.3	74.1	1.0	8.6	4.4	1.2	1.0	0.3	0.1	83.4	1.0	15.6	0.081	0.506	25.214431	-104.130871
T. C. (Durango - Ent. La Zarca)-Ent. Rodeo	98.00	1	0	835	3.5	83.1	1.9	3.6	2.9	1.6	1.2	1.3	0.9	86.6	1.9	11.5	0.095	0.532	25.129536	-104.536619

DURANGO

21 CARR: Ramal a Otinapa

CLAVE: 10002

RUTA: MEX-040

AÑO: 2025

LUGAR	ESTACION				CLASIFICACION VEHICULAR EN PORCIENTO														COORDENADAS	
	KM	TE	SC	TDPA	M	A	B	C2	C3	T3S2	T3S3	T3S2R4	OTROS	A	B	C	K'	D	LATITUD	LONGITUD
T. C. Durango - Villa Unión Otinapa	0.00	3	0	255	4.4	86.8	0.7	2.9	2.6	1.3	0.8	0.4	0.1	91.2	0.7	8.1	0.090	0.609	23.926282	-104.940500
	19.65																			

22 CARR: Ramal a Santa Clara

CLAVE: 10287

RUTA: MEX-049

AÑO: 2025

LUGAR	ESTACION				CLASIFICACION VEHICULAR EN PORCIENTO														COORDENADAS	
	KM	TE	SC	TDPA	M	A	B	C2	C3	T3S2	T3S3	T3S2R4	OTROS	A	B	C	K'	D	LATITUD	LONGITUD
T. C. Ent. La Chicharrona - Cuencamé Santa Clara	0.00	3	0	826	2.5	90.4	2.3	3.7	0.5	0.3	0.2	0.1	0.0	92.9	2.3	4.8	0.105	0.621	24.440427	-103.486239
	14.00																			

23 CARR: Ramal a Velardeña

CLAVE:

RUTA: MEX-040

AÑO: 2025

LUGAR	ESTACION				CLASIFICACION VEHICULAR EN PORCIENTO														COORDENADAS	
	KM	TE	SC	TDPA	M	A	B	C2	C3	T3S2	T3S3	T3S2R4	OTROS	A	B	C	K'	D	LATITUD	LONGITUD
T. C. Durango - Torreón Velardeña	0.00	3	0	2541	4.3	84.8	0.8	5.9	2.6	0.8	0.7	0.1	0.0	89.1	0.8	10.1	0.095	0.607	25.083197	-103.761893
	4.30																			

24 CARR: Ramal a Villa Juárez

CLAVE: 10287

RUTA: MEX-040

AÑO: 2025

LUGAR	ESTACION				CLASIFICACION VEHICULAR EN PORCIENTO														COORDENADAS	
	KM	TE	SC	TDPA	M	A	B	C2	C3	T3S2	T3S3	T3S2R4	OTROS	A	B	C	K'	D	LATITUD	LONGITUD
T. C. Gómez Palacio - La Unión	0.00	3	1	2726	11.5	80.5	1.0	4.7	1.0	0.7	0.2	0.2	0.2	92.0	1.0	7.0	0.110	0.544	25.517641	-103.494695
T. C. Gómez Palacio - La Unión Villa Juárez	0.00	3	2	2615	11.3	80.4	1.0	5.0	1.0	0.7	0.2	0.2	0.2	91.7	1.0	7.3	0.117	0.544	25.517564	-103.494661
	13.00																			

25 CARR: Ramal a Villa Ocampo

CLAVE:

RUTA: MEX-045

AÑO: 2025

LUGAR	ESTACION				CLASIFICACION VEHICULAR EN PORCIENTO														COORDENADAS	
	KM	TE	SC	TDPA	M	A	B	C2	C3	T3S2	T3S3	T3S2R4	OTROS	A	B	C	K'	D	LATITUD	LONGITUD
T. C. La Zarca - Hidalgo del Parral Villa de Ocampo	0.00	3	0	1071	3.0	92.5	0.4	3.0	0.8	0.2	0.1	0.0	0.0	95.5	0.4	4.1	0.120	0.531	26.440696	-105.496228
	1.10																			

DURANGO

26 CARR: Ramal Distribuidor Presa Peña del Águila

CLAVE: 10016

RUTA: MEX-045

AÑO: 2025

LUGAR	ESTACION				CLASIFICACION VEHICULAR EN PORCIENTO										COORDENADAS					
	KM	TE	SC	TDPA	M	A	B	C2	C3	T3S2	T3S3	T3S2R4	OTROS	A	B	C	K'	D	LATITUD	LONGITUD
T. C. Durango - Ent. La Zarca Sur	0.00																			
T. Der. San José del Molino	10.50	1	0	785	8.8	78.8	2.5	6.4	1.6	1.2	0.5	0.2	0.0	87.6	2.5	9.9	0.096	0.520	24.206967	-104.661652
T. C. Durango - Ent. La Zarca Norte	19.00																			

27 CARR: Zacatecas - Durango

CLAVE: 00544

RUTA: MEX-045

AÑO: 2025

LUGAR	ESTACION				CLASIFICACION VEHICULAR EN PORCIENTO										COORDENADAS					
	KM	TE	SC	TDPA	M	A	B	C2	C3	T3S2	T3S3	T3S2R4	OTROS	A	B	C	K'	D	LATITUD	LONGITUD
Zacatecas	0.00																			
T. Izq. Guadalajara	6.40	3	1	16017	1.7	78.2	3.6	7.5	4.2	3.5	0.4	0.7	0.2	79.9	3.6	16.5	0.096	0.536	22.782591	-102.627200
T. Izq. Guadalajara	6.40	3	2	17239	1.5	79.0	3.4	7.4	4.2	3.6	0.3	0.5	0.1	80.5	3.4	16.1	0.086	0.536	22.782610	-102.627295
T. Der. Saltillo (T. Morelos)	15.00	1	1	14931	1.1	82.9	3.0	5.4	1.4	4.3	0.8	0.9	0.2	84.0	3.0	13.0	0.090	0.594	22.850415	-102.623967
T. Der. Saltillo (T. Morelos)	15.00	1	2	16583	1.3	85.0	3.1	3.4	1.2	3.9	1.1	0.8	0.2	86.3	3.1	10.6	0.082	0.594	22.851249	-102.643950
T. Der. Saltillo (T. Morelos)	15.00	3	1	15121	1.9	71.0	4.8	9.2	3.4	4.6	1.8	2.7	0.6	72.9	4.8	22.3	0.092	0.615	22.877587	-102.638987
T. Der. Saltillo (T. Morelos)	15.00	3	2	15744	1.7	71.6	4.8	9.0	3.2	4.3	2.0	2.9	0.5	73.3	4.8	21.9	0.109	0.615	22.870456	-102.651915
T. C. Libramiento Noreste de Zacatecas (Cuota)	20.50																			
T. Libramiento de Víctor Rosales	26.20																			
Víctor Rosales	28.00	1	1	14225	1.5	74.9	3.7	5.5	2.8	7.5	2.2	1.6	0.3	76.4	3.7	19.9	0.081	0.576	22.919344	-102.676059
Víctor Rosales	28.00	1	2	14868	1.7	75.2	3.5	5.0	2.7	6.8	2.0	2.5	0.6	76.9	3.5	19.6	0.091	0.576	22.919222	-102.676303
T. Der. Facultad de Veterinaria	32.30	1	1	9513	1.6	66.1	4.5	9.5	2.5	11.1	2.2	1.9	0.6	67.7	4.5	27.8	0.081	0.516	22.975081	-102.722285
T. Der. Facultad de Veterinaria	32.30	1	2	8618	1.4	66.7	4.4	9.4	2.3	11.0	2.3	2.0	0.5	68.1	4.4	27.5	0.089	0.516	22.975026	-102.722374
Gral. Enrique Estrada	34.60	3	1	10312	1.9	65.4	4.7	9.5	2.2	12.0	2.5	1.5	0.3	67.3	4.7	28.0	0.079	0.528	23.012014	-102.751609
Gral. Enrique Estrada	34.60	3	2	9570	1.7	66.8	4.2	9.3	2.1	11.6	2.1	1.6	0.6	68.5	4.2	27.3	0.080	0.528	23.011962	-102.751883
T. Libramiento de Víctor Rosales	35.90																			
T. Libramiento de Fresnillo Sur	49.30																			
Fresnillo	58.50	1	1	10622	1.5	78.0	3.2	8.9	2.8	3.0	2.2	0.3	0.1	79.5	3.2	17.3	0.089	0.541	23.160446	-102.852383
Fresnillo	58.50	1	2	10235	1.6	77.4	3.3	8.7	3.1	3.0	2.5	0.3	0.1	79.0	3.3	17.7	0.088	0.541	23.160171	-102.852360
T. C. Libramiento de Fresnillo (Cuota) Norte	66.40	1	1	5393	2.6	71.6	5.2	10.1	6.7	1.9	1.2	0.6	0.1	74.2	5.2	20.6	0.096	0.502	23.236462	-102.915577
T. C. Libramiento de Fresnillo (Cuota) Norte	66.40	1	2	5847	2.6	72.3	4.9	9.9	6.4	1.9	1.3	0.6	0.1	74.9	4.9	20.2	0.085	0.502	23.236410	-102.915681
Ent. La Chicharrona	74.30	1	1	8398	2.3	64.6	3.9	10.7	3.0	8.6	3.5	2.6	0.8	66.9	3.9	29.2	0.105	0.538	23.288732	-102.951665
Ent. La Chicharrona	74.30	1	2	8560	2.3	64.7	4.3	11.0	2.9	8.7	3.3	2.1	0.7	67.0	4.3	28.7	0.089	0.538	23.288735	-102.952005
Ent. La Chicharrona	74.30	3	0	6332	2.1	64.6	5.8	17.1	2.9	4.5	2.0	0.8	0.2	66.7	5.8	27.5	0.087	0.535	23.307808	-102.964732
T. Der. Sain Alto	121.00	3	0	4437	1.9	66.7	5.1	14.7	2.6	5.0	2.5	1.2	0.3	68.6	5.1	26.3	0.081	0.501	23.580906	-103.273915
T. Izq. Sombrerete (2º Acceso)	161.50	3	0	5188	2.1	71.6	4.1	11.1	2.4	4.8	2.5	1.2	0.2	73.7	4.1	22.2	0.098	0.510	23.646813	-103.651493
T. C. Libramiento de Sombrerete	165.00	3	0	5508	2.4	71.1	4.8	13.2	2.0	3.2	1.7	1.2	0.4	73.5	4.8	21.7	0.084	0.504	23.660675	-103.668855

DURANGO

27 CARR: Zacatecas - Durango

CLAVE: 00544

RUTA: MEX-045

AÑO: 2025

LUGAR	ESTACION				CLASIFICACION VEHICULAR EN PORCIENTO										COORDENADAS					
	KM	TE	SC	TDPA	M	A	B	C2	C3	T3S2	T3S3	T3S2R4	OTROS	A	B	C	K'	D	LATITUD	LONGITUD
Lim. Edos. Term. Zac. Ppia. Dgo.	190.08																			
X. C. SÚchil - Villa Unión	206.98	1	0	3811	3.9	72.5	5.7	4.0	2.0	5.9	2.5	2.8	0.7	76.4	5.7	17.9	0.082	0.518	23.750125	-103.963320
X. C. SÚchil - Villa Unión	206.98	3	0	6426	5.4	76.3	3.9	4.5	1.2	4.3	1.7	2.2	0.5	81.7	3.9	14.4	0.082	0.577	23.744194	-104.000630
T. Izq. Graceros	210.00	1	0	5583	5.1	75.9	4.0	5.1	1.1	4.8	1.7	1.8	0.5	81.0	4.0	15.0	0.085	0.515	23.747799	-104.034190
Amado Nervo	231.51	1	0	5506	5.1	73.3	4.9	6.4	1.6	5.2	1.7	1.4	0.4	78.4	4.9	16.7	0.075	0.530	23.839304	-104.180426
Amado Nervo	231.51	3	0	6306	5.8	75.4	4.2	5.3	1.4	4.5	1.7	1.5	0.2	81.2	4.2	14.6	0.092	0.555	23.844279	-104.195714
Nombre de Dios	236.80	1	0	2763	8.9	77.7	4.2	8.3	0.5	0.1	0.1	0.1	0.1	86.6	4.2	9.2	0.086	0.534	23.843786	-104.223828
Nombre de Dios	236.80	3	0	4068	9.9	84.0	1.7	3.2	0.6	0.3	0.1	0.1	0.1	93.9	1.7	4.4	0.091	0.518	23.851333	-104.248827
T. Der. Constanacia	240.60	3	0	6365	3.1	78.9	4.3	4.0	1.7	3.7	2.0	1.8	0.5	82.0	4.3	13.7	0.083	0.542	23.872137	-104.269018
T. Der. Tuitán	250.80	3	0	6592	4.1	79.0	4.6	3.8	1.4	4.3	1.4	1.2	0.2	83.1	4.6	12.3	0.085	0.534	23.923113	-104.337215
T. Der. Independencia y Libertad	261.70	1	0	6703	4.4	78.9	4.2	3.6	1.1	4.5	1.6	1.4	0.3	83.3	4.2	12.5	0.088	0.541	23.993473	-104.373940
T. Der. Independencia y Libertad	261.70	3	1	3814	1.5	80.7	4.3	3.6	1.8	4.4	1.4	1.9	0.4	82.2	4.3	13.5	0.131	0.704	24.011760	-104.405197
T. Der. Independencia y Libertad	261.70	3	2	3937	1.7	80.6	4.8	3.9	1.6	3.9	1.6	1.5	0.4	82.3	4.8	12.9	0.101	0.704	24.011654	-104.405198
T. Izq. Parras de La Fuente	276.60	1	1	4646	2.2	81.6	4.7	4.0	1.1	3.4	1.5	1.1	0.4	83.8	4.7	11.5	0.125	0.751	24.019155	-104.506511
T. Izq. Parras de La Fuente	276.60	1	2	4639	2.0	81.5	4.7	3.7	1.5	3.5	1.3	1.4	0.4	83.5	4.7	11.8	0.094	0.751	24.019060	-104.506530
T. Izq. Parras de La Fuente	276.60	3	1	4342	4.3	83.4	3.0	4.9	1.4	1.7	0.7	0.5	0.1	87.7	3.0	9.3	0.096	0.510	24.021358	-104.527036
T. Izq. Parras de La Fuente	276.60	3	2	4768	4.0	83.3	2.9	5.0	1.7	1.8	0.8	0.4	0.1	87.3	2.9	9.8	0.076	0.510	24.021244	-104.527049
Durango	287.30	1	1	8730	5.4	84.6	1.8	4.6	1.4	1.1	0.4	0.5	0.2	90.0	1.8	8.2	0.084	0.505	24.026363	-104.574446
Durango	287.30	1	2	8439	5.3	84.5	1.9	4.7	1.4	1.0	0.4	0.6	0.2	89.8	1.9	8.3	0.077	0.505	24.026256	-104.574472

28 CARR: Durango - Mazatlán (Cuota)

CLAVE: 00084

RUTA: MEX-040D

AÑO: 2025

LUGAR	ESTACION				CLASIFICACION VEHICULAR EN PORCIENTO										COORDENADAS					
	KM	TE	SC	TDPA	M	A	B	C2	C3	T3S2	T3S3	T3S2R4	OTROS	A	B	C	K'	D	LATITUD	LONGITUD
Libramiento de Durango	21.30	3	0	4229	4.4	60.7	6.4	4.0	2.7	10.7	3.0	7.2	0.9	65.1	6.4	28.5	0.091	0.547	24.006052	-104.731258
Plaza de Cobro Durango	22.20	2	0	3335	1.1	62.3	3.7	3.0	3.6	15.0	2.2	7.8	1.3	63.4	3.7	32.9	0.108	0.500	24.005080	-104.734540
Ent. Olinapa	44.50	1	0	4099	3.0	63.7	5.2	5.1	3.1	10.5	2.5	5.9	1.0	66.7	5.2	28.1	0.098	0.660	23.982233	-104.943501
Plaza de Cobro Llano Grande	73.80	2	0	2984	1.1	59.1	4.0	3.1	3.8	16.5	2.4	8.4	1.6	60.2	4.0	35.8	0.108	0.500	23.864514	-105.233202
X. C. Durango - Villa Unión	80.14	1	0	4154	3.5	61.5	6.2	6.2	2.4	11.6	3.2	5.0	0.4	65.0	6.2	28.8	0.063	0.654	23.859504	-105.246689
T. Der. El Salto 1er Acceso	91.60	1	0	5137	3.1	66.1	5.2	4.6	2.2	10.6	2.8	4.6	0.8	69.2	5.2	25.6	0.068	0.681	23.801381	-105.328089
T. Der. El Salto 2do Acceso	104.20	1	0	3217	4.5	58.3	6.6	7.5	2.4	10.7	3.3	5.9	0.8	62.8	6.6	30.6	0.091	0.589	23.756336	-105.424083
T. Der. El Salto 2do Acceso	104.20	3	0	4991	4.3	58.0	6.5	8.9	2.7	11.0	3.6	4.7	0.3	62.3	6.5	31.2	0.070	0.504	23.756880	-105.440776
T. Der. La Campana	111.00	3	0	3914	4.2	54.2	6.6	7.9	3.5	10.9	3.7	8.1	0.9	58.4	6.6	35.0	0.067	0.540	23.721591	-105.488449
Lim. Edos. Term. Dgo. Ppia. Sin.	157.40																			
Entronque Santa Lucia	172.20	3	0	4206	5.4	62.4	6.1	4.4	2.7	9.8	3.2	5.6	0.4	67.8	6.1	26.1	0.085	0.503	23.452179	-105.842412

DURANGO

28 CARR: Durango - Mazatlán (Cuota)

CLAVE: 00084

RUTA: MEX-040D

AÑO: 2025

LUGAR	ESTACION				CLASIFICACION VEHICULAR EN PORCIENTO														COORDENADAS	
	KM	TE	SC	TDPA	M	A	B	C2	C3	T3S2	T3S3	T3S2R4	OTROS	A	B	C	K'	D	LATITUD	LONGITUD
Concordia	213.70	1	0	3584	5.5	60.9	5.6	5.0	2.3	11.5	2.6	6.4	0.2	66.4	5.6	28.0	0.100	0.591	23.267885	-106.040789
Concordia	213.70	3	0	3092	3.2	62.6	6.3	4.0	2.1	12.7	2.1	6.2	0.8	65.8	6.3	27.9	0.100	0.641	23.250152	-106.061777
Villa Unión	229.70	1	0	3567	3.9	58.4	7.5	7.5	1.6	10.1	2.5	7.6	0.9	62.3	7.5	30.2	0.115	0.544	23.201300	-106.164259

29 CARR: Durango - Yerbanís (Cuota)

CLAVE: 10003

RUTA: MEX-040D

AÑO: 2025

LUGAR	ESTACION				CLASIFICACION VEHICULAR EN PORCIENTO														COORDENADAS	
	KM	TE	SC	TDPA	M	A	B	C2	C3	T3S2	T3S3	T3S2R4	OTROS	A	B	C	K'	D	LATITUD	LONGITUD
T. C. Durango - Torreón	0.00																			
T. Der. Aeropuerto	5.30	1	1	4470	2.6	75.4	4.3	5.9	1.3	5.6	1.5	2.5	0.9	78.0	4.3	17.7	0.088	0.561	24.122198	-104.542040
T. Der. Aeropuerto	5.30	1	2	4574	2.4	75.8	4.7	5.6	1.2	5.2	1.4	3.1	0.6	78.2	4.7	17.1	0.087	0.561	24.122292	-104.542181
Plaza de Cobro Durango	5.50	2	1	1834	0.6	66.1	4.8	3.2	2.4	12.1	2.3	7.0	1.5	66.7	4.8	28.5	0.117	0.500	24.131646	-104.534037
Plaza de Cobro Durango	5.50	2	2	1834	0.6	66.1	4.8	3.2	2.4	12.1	2.3	7.0	1.5	66.7	4.8	28.5	0.117	0.500	24.131646	-104.534037
X. C. Durango - Torreón	49.10	3	1	2009	3.1	64.7	5.6	6.6	1.6	9.8	2.5	5.1	1.0	67.8	5.6	26.6	0.088	0.554	24.407702	-104.245054
X. C. Durango - Torreón	49.10	3	2	2081	3.2	65.2	6.1	6.9	1.4	9.5	2.4	4.5	0.8	68.4	6.1	25.5	0.086	0.554	24.407810	-104.245056
Plaza de Cobro Yerbanís	112.19	2	1	1358	0.6	60.6	5.9	3.4	2.7	13.9	2.5	8.8	1.6	61.2	5.9	32.9	0.117	0.500	24.730819	-103.861843
Plaza de Cobro Yerbanís	112.19	2	2	1358	0.6	60.6	5.9	3.4	2.7	13.9	2.5	8.8	1.6	61.2	5.9	32.9	0.117	0.500	24.730819	-103.861843
Ent. Yerbanís	118.00																			

30 CARR: Gómez Palacio - Corralitos (Cuota)

CLAVE: 00016

RUTA: MEX-049D

AÑO: 2025

LUGAR	ESTACION				CLASIFICACION VEHICULAR EN PORCIENTO														COORDENADAS	
	KM	TE	SC	TDPA	M	A	B	C2	C3	T3S2	T3S3	T3S2R4	OTROS	A	B	C	K'	D	LATITUD	LONGITUD
T. C. Gómez Palacio - Jiménez (Libre)	38.00																			
T. Izq. Bermejillo	40.10	1	1	2798	2.5	44.7	6.1	5.1	2.5	26.6	5.0	6.7	0.8	47.2	6.1	46.7	0.074	0.506	25.879257	-103.611939
T. Izq. Bermejillo	40.10	1	2	3035	2.1	39.5	7.2	5.4	2.4	29.2	5.4	7.8	1.0	41.6	7.2	51.2	0.069	0.506	25.879289	-103.612096
T. Izq. Bermejillo	40.10	3	1	3018	3.3	39.9	9.0	4.8	2.4	26.5	5.3	7.8	1.0	43.2	9.0	47.8	0.068	0.560	25.898619	-103.612598
T. Izq. Bermejillo	40.10	3	2	3543	3.4	39.8	9.3	5.3	2.2	26.4	5.2	7.4	1.0	43.2	9.3	47.5	0.065	0.560	25.898554	-103.612851
Plaza de Cobro Bermejillo	44.16	2	1	2768	0.2	34.5	8.6	2.6	1.8	33.8	6.9	8.0	3.6	34.7	8.6	56.7	0.079	0.500	25.923705	-103.622079
Plaza de Cobro Bermejillo	44.16	2	2	2768	0.2	34.5	8.6	2.6	1.8	33.8	6.9	8.0	3.6	34.7	8.6	56.7	0.079	0.500	25.923705	-103.622079
T. Izq. Ceballos	123.80	1	1	2916	4.8	35.1	9.4	4.5	2.1	31.3	5.1	6.8	0.9	39.9	9.4	50.7	0.073	0.552	26.561188	-104.037666
T. Izq. Ceballos	123.80	1	2	2954	4.1	29.6	10.6	5.3	2.1	34.7	5.9	6.7	1.0	33.7	10.6	55.7	0.072	0.552	26.561081	-104.038081
Plaza de Cobro Ceballos	128.80	2	1	2825	0.2	37.3	4.3	2.8	5.1	31.7	7.2	7.5	3.9	37.5	4.3	58.2	0.079	0.500	26.586801	-104.057535
Plaza de Cobro Ceballos	128.80	2	2	2825	0.2	37.3	4.3	2.8	5.1	31.7	7.2	7.5	3.9	37.5	4.3	58.2	0.079	0.500	26.586801	-104.057535
Lim. Edos. Term. Dgo. Ppia. Chih.	158.00																			

DURANGO

30 CARR: Gómez Palacio - Corralitos (Cuota)

CLAVE: 00016

RUTA: MEX-049D

AÑO: 2025

LUGAR	ESTACION				CLASIFICACION VEHICULAR EN PORCIENTO										COORDENADAS					
	KM	TE	SC	TDPA	M	A	B	C2	C3	T3S2	T3S3	T3S2R4	OTROS	A	B	C	K'	D	LATITUD	LONGITUD
T. C. Gómez Palacio - Jiménez	188.46	1	1	2873	3.5	34.6	10.8	6.5	1.9	29.3	6.2	6.0	1.2	38.1	10.8	51.1	0.080	0.519	26.902426	-104.549606
T. C. Gómez Palacio - Jiménez	188.46	1	2	3014	3.6	34.1	10.7	6.7	2.2	29.4	6.3	5.9	1.1	37.7	10.7	51.6	0.070	0.519	26.901770	-104.550447
T. C. Gómez Palacio - Jiménez	188.46	3	1	3120	7.0	32.8	10.1	6.4	1.9	28.3	6.1	6.2	1.2	39.8	10.1	50.1	0.079	0.510	26.914925	-104.572530
T. C. Gómez Palacio - Jiménez	188.46	3	2	3224	6.9	32.7	10.3	6.5	2.0	28.3	5.8	6.4	1.1	39.6	10.3	50.1	0.071	0.510	26.914160	-104.573123
T. C. Gómez Palacio - Jiménez (Libre)	226.50	1	1	3865	2.8	32.9	10.1	7.0	2.0	30.8	5.7	7.6	1.1	35.7	10.1	54.2	0.064	0.549	27.101515	-104.868884
T. C. Gómez Palacio - Jiménez (Libre)	226.50	1	2	3897	3.0	32.7	10.3	6.8	2.0	30.7	5.8	7.7	1.0	35.7	10.3	54.0	0.055	0.549	27.101495	-104.869117

31 CARR: Libramiento de Durango (Cuota)

CLAVE: 10006

RUTA: MEX-040D

AÑO: 2025

LUGAR	ESTACION				CLASIFICACION VEHICULAR EN PORCIENTO										COORDENADAS					
	KM	TE	SC	TDPA	M	A	B	C2	C3	T3S2	T3S3	T3S2R4	OTROS	A	B	C	K'	D	LATITUD	LONGITUD
T. C. Durango - Torreón	0.00	3	0	6597	2.6	64.8	5.1	5.7	3.3	10.6	3.2	3.8	0.9	67.4	5.1	27.5	0.072	0.514	24.093514	-104.583060
T. C. Av. Estano	5.90	3	0	10065	4.1	73.7	2.2	3.3	3.7	7.5	2.4	2.5	0.6	77.8	2.2	20.0	0.080	0.522	24.075333	-104.625812
X. C. Durango - Ent. La Zarca	10.40	3	0	6782	4.5	61.9	5.3	5.1	3.2	11.9	2.9	4.4	0.8	66.4	5.3	28.3	0.079	0.557	24.068724	-104.669259
T. C. Durango - Villa Unión (Cuota)	21.60	1	0	5737	2.8	67.8	4.5	3.9	2.8	11.2	2.3	3.8	0.9	70.6	4.5	24.9	0.081	0.507	24.015553	-104.727107

32 CARR: Libramiento Norte de Torreón (Cuota)

CLAVE:

RUTA: MEX-040D

AÑO: 2025

LUGAR	ESTACION				CLASIFICACION VEHICULAR EN PORCIENTO										COORDENADAS					
	KM	TE	SC	TDPA	M	A	B	C2	C3	T3S2	T3S3	T3S2R4	OTROS	A	B	C	K'	D	LATITUD	LONGITUD
X. C. Gómez Palacio - Jiménez	0.00	3	0	4720	2.6	35.7	4.2	8.3	3.0	28.8	5.5	10.7	1.2	38.3	4.2	57.5	0.065	0.505	25.631637	-103.507000
Lim. Edos. Term. Dgo. Ppia. Coah.	15.60																			
X. C. La Cuchilla - Torreón	17.36	1	0	4378	3.7	40.0	4.9	4.9	3.9	25.3	4.7	11.8	0.8	43.7	4.9	51.4	0.062	0.659	25.661029	-103.389144
X. C. La Cuchilla - Torreón	17.36	3	0	3526	4.6	34.3	5.7	4.9	3.5	27.7	6.2	12.0	1.1	38.9	5.7	55.4	0.069	0.563	25.647736	-103.353674
X. C. Torreón - Saltillo	40.70	1	0	4358	5.8	28.4	8.0	6.9	4.5	29.9	4.9	10.6	1.0	34.2	8.0	57.8	0.069	0.522	25.547590	-103.226760

33 CARR: Ramal a Guadalupe Victoria

CLAVE:

RUTA: MEX-040D

AÑO: 2025

LUGAR	ESTACION				CLASIFICACION VEHICULAR EN PORCIENTO										COORDENADAS					
	KM	TE	SC	TDPA	M	A	B	C2	C3	T3S2	T3S3	T3S2R4	OTROS	A	B	C	K'	D	LATITUD	LONGITUD
T. C. Durango - Yerbaníz Cuota	0.00	3	0	1495	1.5	85.3	3.5	2.4	0.9	3.4	1.7	1.1	0.2	86.8	3.5	9.7	0.088	0.527	24.466823	-104.162332
T. C. Durango - Torreón	3.80																			

DURANGO

34 CARR: Yerbanis - Gómez Palicio (Cuota)

CLAVE: 10003

RUTA: MEX-040D

AÑO: 2025

LUGAR	ESTACION				CLASIFICACION VEHICULAR EN PORCIENTO										COORDENADAS					
	KM	TE	SC	TDPA	M	A	B	C2	C3	T3S2	T3S3	T3S2R4	OTROS	A	B	C	K'	D	LATITUD	LONGITUD
Ent. Yerbanis	118.00																			
Durango - Torreón	143.20	1	1	1371	1.9	62.0	9.1	4.6	2.7	11.1	2.6	5.4	0.6	63.9	9.1	27.0	0.113	0.520	24.976345	-103.736630
Durango - Torreón	143.20	1	2	1242	2.1	60.5	8.9	4.9	2.7	10.8	3.1	5.9	1.1	62.6	8.9	28.5	0.108	0.520	24.976532	-103.736780
Plaza de Cobro Cuencamé	143.60	2	1	1429	0.7	61.3	6.1	3.3	2.6	13.5	2.2	8.7	1.6	62.0	6.1	31.9	0.089	0.500	24.981714	-103.735206
Plaza de Cobro Cuencamé	143.60	2	2	1429	0.7	61.3	6.1	3.3	2.6	13.5	2.2	8.7	1.6	62.0	6.1	31.9	0.089	0.500	24.981714	-103.735206
X. C. Durango - Torreón	162.00	1	1	3122	2.7	44.9	10.5	4.7	2.0	22.1	3.7	8.4	1.0	47.6	10.5	41.9	0.091	0.611	25.122433	-103.750314
X. C. Durango - Torreón	162.00	1	2	3218	2.4	45.4	10.2	4.7	2.0	22.2	3.9	8.3	0.9	47.8	10.2	42.0	0.077	0.611	25.122413	-103.750405
X. C. Durango - Torreón	162.00	3	1	3323	3.1	48.4	8.9	4.9	2.6	19.4	4.0	7.7	1.0	51.5	8.9	39.6	0.093	0.525	25.149207	-103.748211
X. C. Durango - Torreón	162.00	3	2	3306	2.6	49.3	8.8	5.0	2.2	19.8	3.9	7.5	0.9	51.9	8.8	39.3	0.083	0.525	25.149281	-103.748257
Plaza de Cobro León Guzmán	212.71	1	1	3823	2.8	51.2	8.5	4.3	2.3	18.1	3.8	7.9	1.1	54.0	8.5	37.5	0.075	0.544	25.504917	-103.639795
Plaza de Cobro León Guzmán	212.71	1	2	3728	3.1	51.3	8.4	4.3	2.0	18.2	3.9	7.7	1.1	54.4	8.4	37.2	0.100	0.544	25.504919	-103.639889
Plaza de Cobro León Guzmán	212.71	2	1	2578	0.4	41.8	5.1	3.8	3.7	27.4	4.2	10.7	2.9	42.2	5.1	52.7	0.089	0.500	25.520645	-103.639471
Plaza de Cobro León Guzmán	212.71	2	2	2578	0.4	41.8	5.1	3.8	3.7	27.4	4.2	10.7	2.9	42.2	5.1	52.7	0.089	0.500	25.520645	-103.639471
Plaza de Cobro León Guzmán	212.71	3	1	3196	5.4	40.8	8.5	6.4	3.9	22.2	5.3	6.6	0.9	46.2	8.5	45.3	0.068	0.514	25.537980	-103.638342
Plaza de Cobro León Guzmán	212.71	3	2	2955	5.1	41.4	8.7	6.0	3.8	22.0	5.2	6.9	0.9	46.5	8.7	44.8	0.071	0.514	25.537489	-103.638634
T. C. Gómez Palacio - Jiménez	220.00																			

35 CARR: Amado Nervo - La Ochoa

CLAVE: 10012

RUTA: DGO-542

AÑO: 2025

LUGAR	ESTACION				CLASIFICACION VEHICULAR EN PORCIENTO										COORDENADAS					
	KM	TE	SC	TDPA	M	A	B	C2	C3	T3S2	T3S3	T3S2R4	OTROS	A	B	C	K'	D	LATITUD	LONGITUD
Amado Nervo	0.00	3	0	1961	4.8	86.2	1.4	4.7	1.8	0.6	0.4	0.1	0.0	91.0	1.4	7.6	0.093	0.508	23.853565	-104.172643
Villa Unión	25.00	1	0	4427	13.0	80.3	1.5	4.1	0.5	0.4	0.1	0.1	0.0	93.3	1.5	5.2	0.082	0.515	23.958837	-104.058314
La Ochoa	42.00	1	0	511	13.5	80.6	1.6	2.8	1.0	0.3	0.1	0.1	0.0	94.1	1.6	4.3	0.115	0.525	24.019792	-103.926746

36 CARR: Ceballos - El Mirador

CLAVE: 10417

RUTA: DGO-044

AÑO: 2025

LUGAR	ESTACION				CLASIFICACION VEHICULAR EN PORCIENTO										COORDENADAS					
	KM	TE	SC	TDPA	M	A	B	C2	C3	T3S2	T3S3	T3S2R4	OTROS	A	B	C	K'	D	LATITUD	LONGITUD
Ceballos	0.00	3	0	822	11.1	83.7	0.5	2.4	0.9	1.1	0.2	0.1	0.0	94.8	0.5	4.7	0.092	0.618	26.527277	-104.137830
T. C. Ent. La Zarca - Hidalgo del Parral	113.50	1	0	262	2.3	89.5	0.6	4.7	0.9	1.2	0.8	0.0	0.0	91.8	0.6	7.6	0.118	0.581	26.141957	-105.027951

DURANGO

37 CARR: Durango - Aserradero La Flor

CLAVE: 10422

RUTA: DGO-115

AÑO: 2025

LUGAR	ESTACION				CLASIFICACION VEHICULAR EN PORCIENTO										COORDENADAS					
	KM	TE	SC	TDPA	M	A	B	C2	C3	T3S2	T3S3	T3S2R4	OTROS	A	B	C	K'	D	LATITUD	LONGITUD
Durango	0.00	3	1	13396	7.7	85.0	0.3	5.8	0.5	0.2	0.1	0.3	0.1	92.7	0.3	7.0	0.079	0.516	23.984356	-104.664544
Durango	0.00	3	2	13220	7.5	84.9	0.5	5.6	0.7	0.3	0.2	0.2	0.1	92.4	0.5	7.1	0.078	0.516	23.984288	-104.664415
T. Der. Presa Guadalupe Victoria	4.00	3	1	7680	7.5	84.4	0.4	6.5	0.4	0.3	0.1	0.3	0.1	91.9	0.4	7.7	0.087	0.588	23.975889	-104.664681
T. Der. Presa Guadalupe Victoria	4.00	3	2	7824	7.4	84.1	0.5	6.3	0.7	0.4	0.3	0.2	0.1	91.5	0.5	8.0	0.083	0.588	23.975860	-104.664545
Periférico Sur de Durango	8.00	3	0	697	17.4	56.9	2.2	11.1	6.4	3.5	1.1	1.0	0.4	74.3	2.2	23.5	0.123	0.581	23.948637	-104.672554
La Casita	39.00	1	0	269	11.0	53.9	1.9	5.0	15.5	7.0	3.2	2.2	0.3	64.9	1.9	33.2	0.115	0.516	23.754263	-104.757028
Aserradero La Flor	72.00																			

38 CARR: Jabonoso - Esmeralda

CLAVE: 10004

RUTA: DGO-363

AÑO: 2025

LUGAR	ESTACION				CLASIFICACION VEHICULAR EN PORCIENTO										COORDENADAS					
	KM	TE	SC	TDPA	M	A	B	C2	C3	T3S2	T3S3	T3S2R4	OTROS	A	B	C	K'	D	LATITUD	LONGITUD
Jabonoso	0.00	3	0	4599	14.8	70.4	1.4	4.7	3.5	2.0	1.4	1.5	0.3	85.2	1.4	13.4	0.078	0.599	25.644716	-103.457159
T. Izq. Chimal	10.00	3	0	4168	21.5	66.9	1.8	4.8	2.3	0.9	0.5	1.1	0.2	88.4	1.8	9.8	0.094	0.508	25.700006	-103.442208
Esmeralda	16.30	1	0	2813	25.5	64.6	2.2	4.2	2.2	0.5	0.5	0.3	0.0	90.1	2.2	7.7	0.081	0.524	25.733015	-103.433046

39 CARR: La Torreña - Brittingham

CLAVE: 10010

RUTA: DGO-325

AÑO: 2025

LUGAR	ESTACION				CLASIFICACION VEHICULAR EN PORCIENTO										COORDENADAS					
	KM	TE	SC	TDPA	M	A	B	C2	C3	T3S2	T3S3	T3S2R4	OTROS	A	B	C	K'	D	LATITUD	LONGITUD
La Torreña	0.00	3	0	2908	28.6	56.0	1.2	4.1	2.5	3.8	1.8	1.7	0.3	84.6	1.2	14.2	0.070	0.510	25.639134	-103.579883
X. C. Gómez Palacio - Jiménez	7.00	1	0	5259	18.0	65.5	1.5	5.2	3.7	2.8	1.6	1.4	0.3	83.5	1.5	15.0	0.075	0.504	25.638467	-103.535379
X. C. Gómez Palacio - Jiménez	7.00	3	0	2815	13.8	76.3	2.0	2.2	1.9	1.9	0.6	1.0	0.3	90.1	2.0	7.9	0.081	0.592	25.641300	-103.520110
Chimal	16.00	1	0	2824	11.6	71.4	2.1	5.1	4.0	2.6	1.8	1.3	0.1	83.0	2.1	14.9	0.090	0.543	25.691012	-103.490410
Chimal	16.00	3	0	1349	20.7	58.5	2.3	3.3	9.3	3.5	1.0	1.3	0.1	79.2	2.3	18.5	0.091	0.520	25.697436	-103.490834
Brittingham	33.00	1	0	1029	6.0	78.4	1.1	4.9	4.3	3.9	0.7	0.5	0.2	84.4	1.1	14.5	0.106	0.615	25.774562	-103.572416

40 CARR: Libramiento Cuencamé

CLAVE: 10006

RUTA: DGO

AÑO: 2025

LUGAR	ESTACION				CLASIFICACION VEHICULAR EN PORCIENTO										COORDENADAS					
	KM	TE	SC	TDPA	M	A	B	C2	C3	T3S2	T3S3	T3S2R4	OTROS	A	B	C	K'	D	LATITUD	LONGITUD
T. C. La Chicharrona - Cuencamé	0.00	3	1	1295	6.7	69.9	3.0	12.8	2.7	2.9	1.5	0.4	0.1	76.6	3.0	20.4	0.084	0.591	24.863819	-103.699750
T. C. La Chicharrona - Cuencamé	0.00	3	2	1476	6.4	70.7	2.7	12.9	2.6	2.9	1.4	0.3	0.1	77.1	2.7	20.2	0.087	0.591	24.863778	-103.699819
T. C. Durango - Torreón	2.60	1	1	739	6.0	66.4	3.5	11.1	4.5	3.4	4.0	1.0	0.1	72.4	3.5	24.1	0.097	0.514	24.880874	-103.700377
T. C. Durango - Torreón	2.60	1	2	786	5.9	65.0	3.4	12.6	5.0	3.4	3.7	0.9	0.1	70.9	3.4	25.7	0.097	0.514	24.880930	-103.700441

DURANGO

41 CARR: Libramiento de Torreón-Gómez Palacio-Lerdo

CLAVE: 05516

RUTA: COA-DGO-MEX-040-049

AÑO: 2025

LUGAR	ESTACION				CLASIFICACION VEHICULAR EN PORCIENTO										COORDENADAS					
	KM	TE	SC	TDPA	M	A	B	C2	C3	T3S2	T3S3	T3S2R4	OTROS	A	B	C	K'	D	LATITUD	LONGITUD
X. C. Saltillo - Torreón	0.00	3	1	44279	5.2	84.1	1.6	3.5	1.4	2.0	0.7	1.0	0.5	89.3	1.6	9.1	0.082	0.522	25.540209	-103.370512
X. C. Saltillo - Torreón	0.00	3	2	45885	5.3	84.2	1.5	3.9	1.3	1.8	0.6	1.1	0.3	89.5	1.5	9.0	0.077	0.522	25.540109	-103.370969
T. C. Torreón - San Pedro de las Colonias (Baja)	7.30	1	1	43247	3.7	84.3	1.3	4.6	0.7	3.3	0.9	1.0	0.2	88.0	1.3	10.7	0.082	0.519	25.582611	-103.402777
T. C. Torreón - San Pedro de las Colonias (Alta)	7.30	1	1	20632	1.7	86.2	1.3	3.6	2.2	2.7	1.2	0.9	0.2	87.9	1.3	10.8	0.091	0.519	25.582585	-103.402789
T. C. Torreón - San Pedro de las Colonias (Baja)	7.30	1	2	48421	3.5	83.6	1.4	4.7	0.8	3.5	1.0	1.2	0.3	87.1	1.4	11.5	0.073	0.519	25.582221	-103.402976
T. C. Torreón - San Pedro de las Colonias (Alta)	7.30	1	2	21133	1.8	86.4	1.2	3.7	2.0	3.0	0.9	0.7	0.3	88.2	1.2	10.6	0.076	0.519	25.582252	-103.402969
Lim. Edos. Term. Coah. Ppia. Dgo.	11.80																			
X. C. Gómez Palacio-Tlahualilo	15.90	1	1	34600	3.0	86.7	1.0	4.8	2.4	1.1	0.5	0.4	0.1	89.7	1.0	9.3	0.090	0.637	25.580377	-103.477439
X. C. Gómez Palacio-Tlahualilo	15.90	1	2	37987	3.0	86.7	1.2	5.1	2.1	1.0	0.4	0.4	0.1	89.7	1.2	9.1	0.095	0.637	25.580192	-103.477879
X. C. Gómez Palacio-Jiménez	18.75	3	1	39373	6.0	85.4	0.9	4.2	1.0	1.0	0.3	0.9	0.3	91.4	0.9	7.7	0.080	0.539	25.591215	-103.511132
X. C. Gómez Palacio-Jiménez	18.75	3	2	36770	5.7	85.5	0.9	4.1	1.3	1.1	0.4	0.7	0.3	91.2	0.9	7.9	0.079	0.539	25.591066	-103.510755
T. C. Durango - Torreón	28.60																			

42 CARR: Mezquital - San Miguel de Temoaya

CLAVE: 10006

RUTA: DGO

AÑO: 2025

LUGAR	ESTACION				CLASIFICACION VEHICULAR EN PORCIENTO										COORDENADAS					
	KM	TE	SC	TDPA	M	A	B	C2	C3	T3S2	T3S3	T3S2R4	OTROS	A	B	C	K'	D	LATITUD	LONGITUD
T. C. Durango - Mezquital	0.00	3	0	416	5.9	80.0	1.1	8.2	3.4	0.8	0.4	0.2	0.0	85.9	1.1	13.0	0.120	0.580	23.497605	-104.390613
San Miguel de Temoaya	48.00	1	0	365	6.2	83.6	0.9	4.6	3.1	0.8	0.3	0.4	0.1	89.8	0.9	9.3	0.118	0.535	23.304262	-104.507304

43 CARR: Ramal a San Juan del Río

CLAVE: 10001

RUTA: DGO-290

AÑO: 2025

LUGAR	ESTACION				CLASIFICACION VEHICULAR EN PORCIENTO										COORDENADAS					
	KM	TE	SC	TDPA	M	A	B	C2	C3	T3S2	T3S3	T3S2R4	OTROS	A	B	C	K'	D	LATITUD	LONGITUD
T. C. Durango - Ent. La Zarca	0.00	3	0	3350	3.6	89.4	1.5	3.0	1.7	0.6	0.1	0.1	0.0	93.0	1.5	5.5	0.101	0.598	24.797470	-104.498823
San Juan del Río	5.00	1	1	2365	4.3	91.6	0.8	2.5	0.4	0.2	0.2	0.0	0.0	95.9	0.8	3.3	0.096	0.523	24.785751	-104.473758
San Juan del Río	5.00	1	2	2508	4.1	92.0	0.9	2.2	0.4	0.2	0.2	0.0	0.0	96.1	0.9	3.0	0.102	0.523	24.785817	-104.473689

44 CARR: Súchil - Villa Unión

CLAVE: 10419

RUTA: DGO-241

AÑO: 2025

LUGAR	ESTACION				CLASIFICACION VEHICULAR EN PORCIENTO										COORDENADAS					
	KM	TE	SC	TDPA	M	A	B	C2	C3	T3S2	T3S3	T3S2R4	OTROS	A	B	C	K'	D	LATITUD	LONGITUD
Súchil	0.00	3	1	1423	10.0	83.9	1.9	3.3	0.6	0.1	0.1	0.1	0.0	93.9	1.9	4.2	0.096	0.552	23.630072	-103.924340
Súchil	0.00	3	2	1407	9.7	84.1	2.2	3.1	0.5	0.2	0.1	0.1	0.0	93.8	2.2	4.0	0.098	0.552	23.630012	-103.924408
Vicente Guerrero	13.40	1	0	2268	4.9	89.0	1.7	3.9	0.2	0.2	0.1	0.0	0.0	93.9	1.7	4.4	0.101	0.543	23.711577	-103.970184

DURANGO

44 CARR: SÚCHIL - VILLA UNIÓN

CLAVE: 10419

RUTA: DGO-241

AÑO: 2025

LUGAR	ESTACION				CLASIFICACION VEHICULAR EN PORCIENTO										COORDENADAS					
	KM	TE	SC	TDPA	M	A	B	C2	C3	T3S2	T3S3	T3S2R4	OTROS	A	B	C	K'	D	LATITUD	LONGITUD
X. C. Zacatecas - Durango	14.50	1	1	4832	7.8	86.0	1.1	2.2	1.3	0.7	0.4	0.5	0.0	93.8	1.1	5.1	0.097	0.504	23.741164	-103.984614
X. C. Zacatecas - Durango	14.50	1	2	4851	8.0	87.4	1.0	1.7	1.0	0.4	0.1	0.4	0.0	95.4	1.0	3.6	0.094	0.504	23.741140	-103.984702
X. C. Zacatecas - Durango	14.50	3	0	2705	7.5	87.2	1.0	3.2	0.7	0.2	0.1	0.1	0.0	94.7	1.0	4.3	0.093	0.575	23.745519	-103.987386
Villa Unión	41.40	1	0	2514	13.3	82.5	1.1	2.2	0.5	0.3	0.1	0.0	0.0	95.8	1.1	3.1	0.088	0.536	23.959244	-104.049551

45 CARR: TLAHUALILLO DE ZARAGOZA - T.C. GÓMEZ PALACIO - JIMÉNEZ

CLAVE: 10419

RUTA: MEX-040-DGO

AÑO: 2025

LUGAR	ESTACION				CLASIFICACION VEHICULAR EN PORCIENTO										COORDENADAS					
	KM	TE	SC	TDPA	M	A	B	C2	C3	T3S2	T3S3	T3S2R4	OTROS	A	B	C	K'	D	LATITUD	LONGITUD
Tlahualillo	0.00	3	0	911	13.6	78.6	1.2	1.4	0.8	2.1	1.4	0.9	0.0	92.2	1.2	6.6	0.082	0.573	26.117609	-103.445897
T. C. Gómez Palacio - Jiménez	37.00	1	0	157	6.9	54.1	4.5	7.2	4.0	13.5	5.5	4.3	0.0	61.0	4.5	34.5	0.146	0.522	26.155841	-103.776276

46 CARR: YERBANÍS - PEÑÓN BLANCO

CLAVE: 10032

RUTA: DGO-316

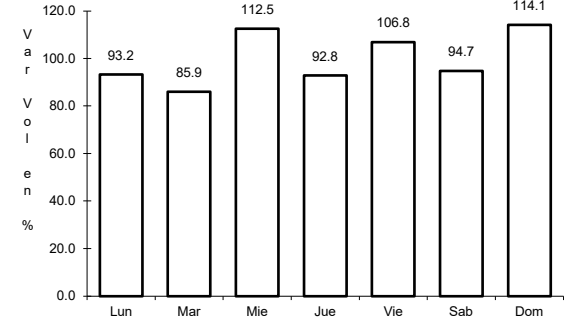
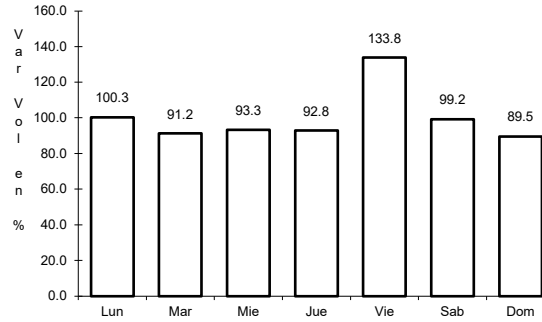
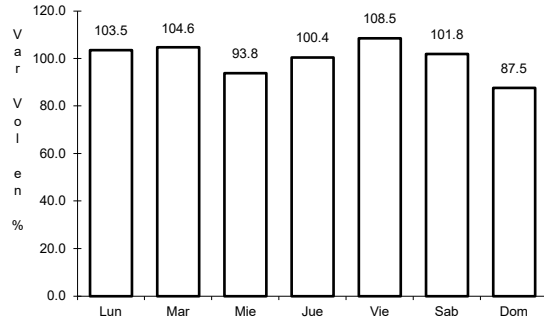
AÑO: 2025

LUGAR	ESTACION				CLASIFICACION VEHICULAR EN PORCIENTO										COORDENADAS					
	KM	TE	SC	TDPA	M	A	B	C2	C3	T3S2	T3S3	T3S2R4	OTROS	A	B	C	K'	D	LATITUD	LONGITUD
Yerbanís	0.00	3	0	1158	3.3	84.2	2.7	3.5	2.4	1.7	1.0	1.2	0.0	87.5	2.7	9.8	0.095	0.564	24.735700	-103.848136
Peñón Blanco	22.00	1	0	887	4.1	90.4	0.9	3.7	0.6	0.1	0.2	0.0	0.0	94.5	0.9	4.6	0.131	0.672	24.779148	-104.006458

1 CARR: Bermejillo - El Palmito

CLAVE: 10105

ruta: MEX-030



Km: 0.00 Tipo: 3 Sent: 0

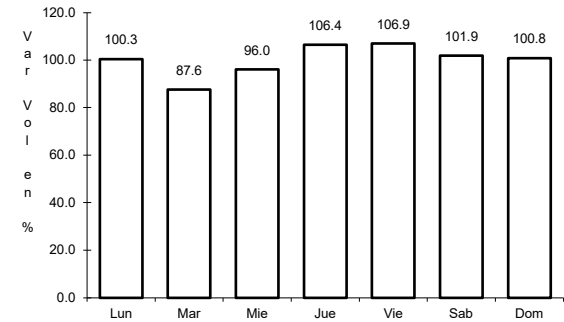
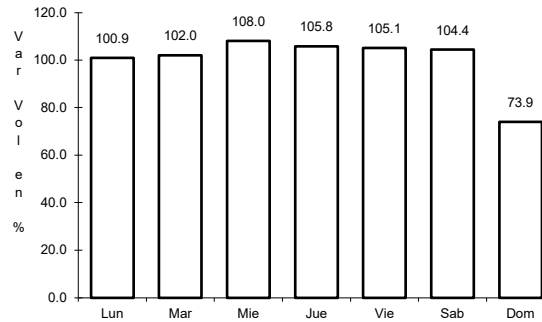
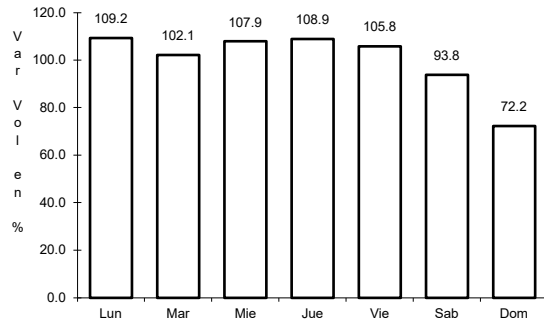
Km: 86.00 Tipo: 1 Sent: 0

Km: 160.00 Tipo: 1 Sent: 0

2 CARR: Durango - Ent. La Zarca

CLAVE: 10016

ruta: MEX-045



Km: 0.00 Tipo: 3 Sent: 1

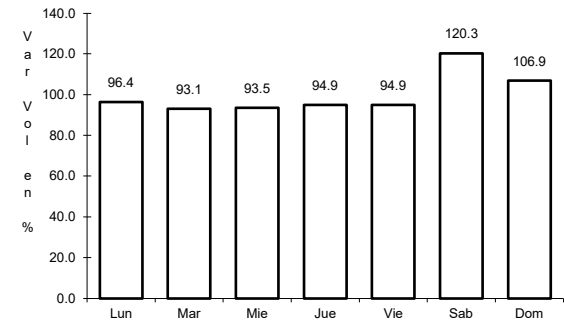
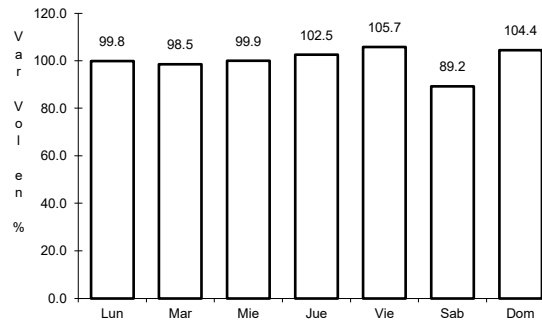
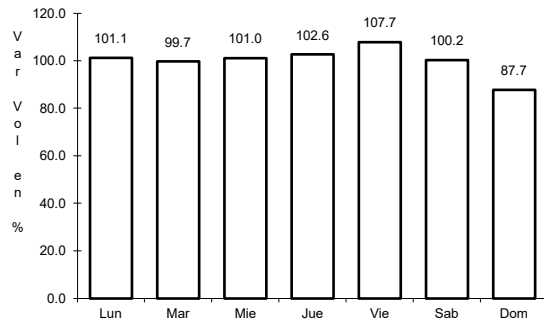
Km: 0.00 Tipo: 3 Sent: 2

Km: 239.50 Tipo: 1 Sent: 0

3 CARR: Durango - Mezquital

CLAVE: 10423

ruta: MEX-023



Km: 0.00 Tipo: 3 Sent: 1

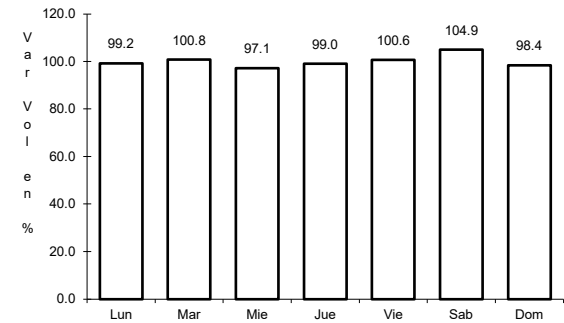
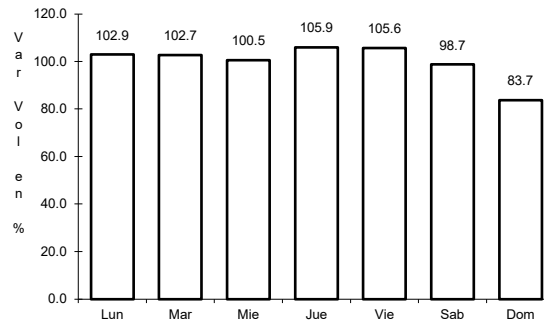
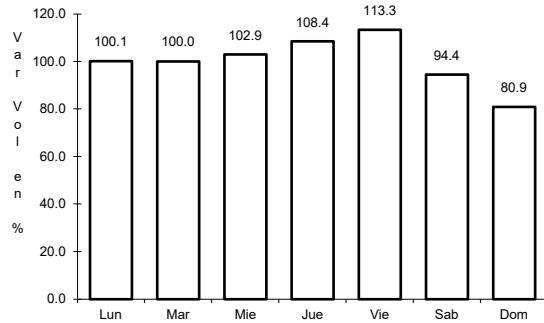
Km: 0.00 Tipo: 3 Sent: 2

Km: 13.00 Tipo: 3 Sent: 0

4 CARR: Durango - Torreón

CLAVE: 10085

ruta: MEX-040



Km: 0.00 Tipo: 3 Sent: 1

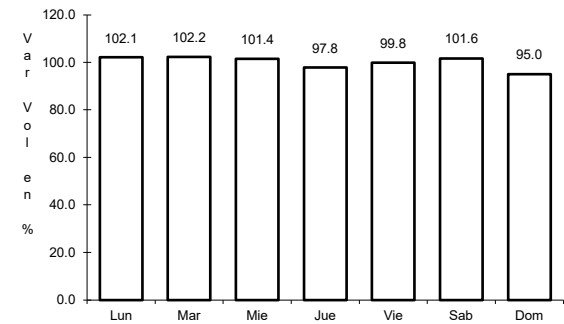
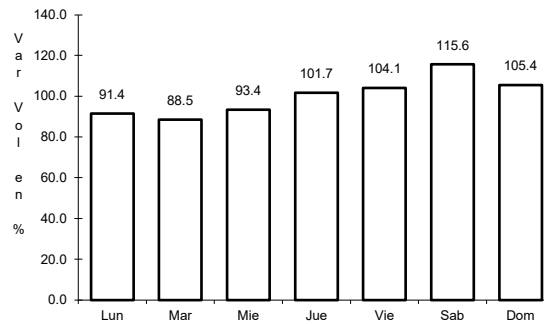
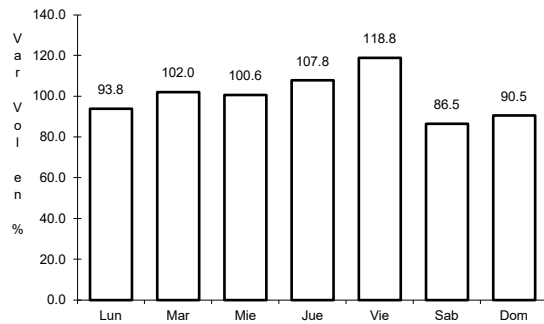
Km: 0.00 Tipo: 3 Sent: 2

Km: 120.90 Tipo: 1 Sent: 0

5 CARR: Durango - Villa Unión

CLAVE: 0083

ruta: MEX-040



Km: 0.00 Tipo: 3 Sent: 0

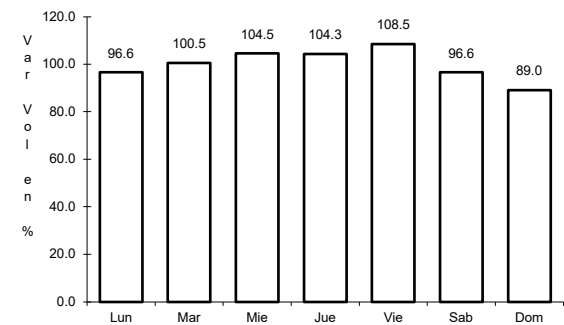
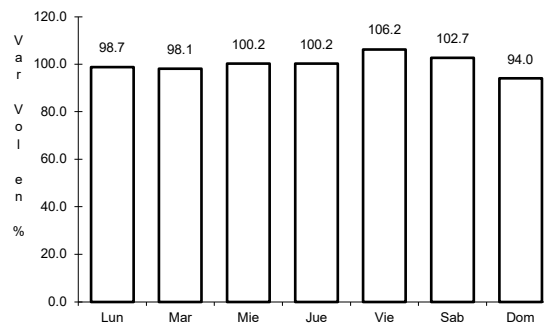
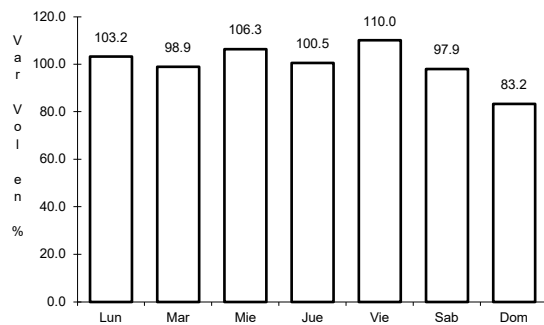
Km: 145.50 Tipo: 1 Sent: 0

Km: 294.40 Tipo: 1 Sent: 0

6 CARR: Ent. La Chicharrona - Cuencamé

CLAVE: 00152

ruta: MEX-049



Km: 0.00 Tipo: 3 Sent: 1

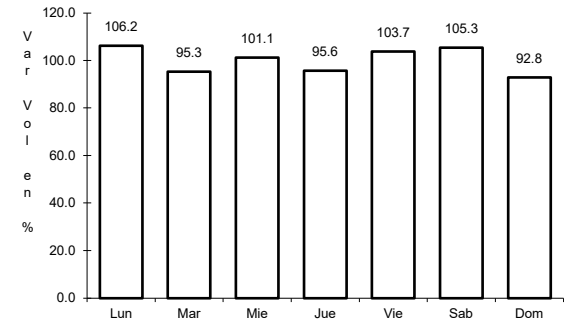
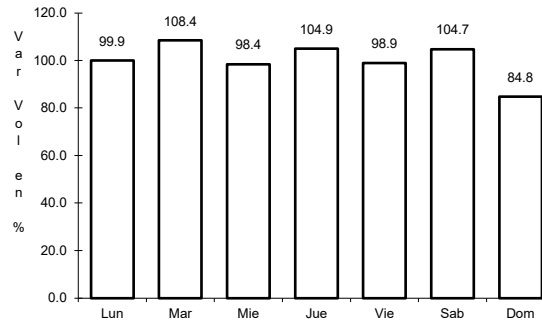
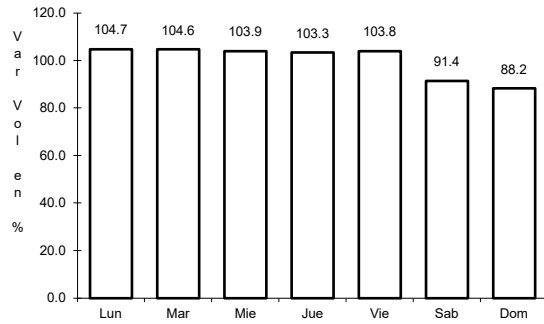
Km: 0.00 Tipo: 3 Sent: 2

Km: 124.50 Tipo: 1 Sent: 0

7 CARR: Ent. La Zarca - Hidalgo del Parral

CLAVE: 00488

ruta: MEX-045



Km: 238.60 Tipo: 3 Sent: 0

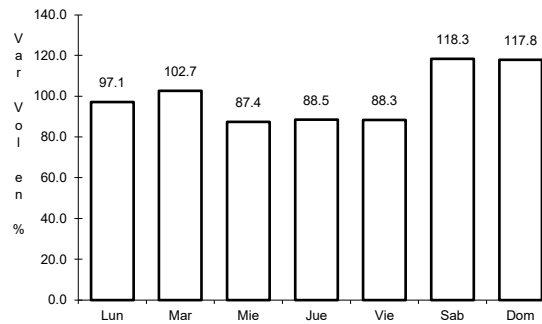
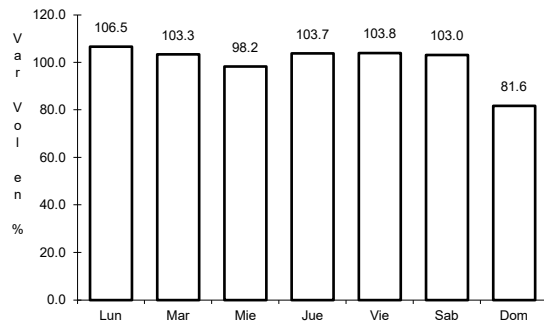
Km: 329.27 Tipo: 3 Sent: 0

Km: 408.10 Tipo: 1 Sent: 0

8 CARR: Ent. Los Herrera - Topia

CLAVE: 10090

ruta: MEX-036



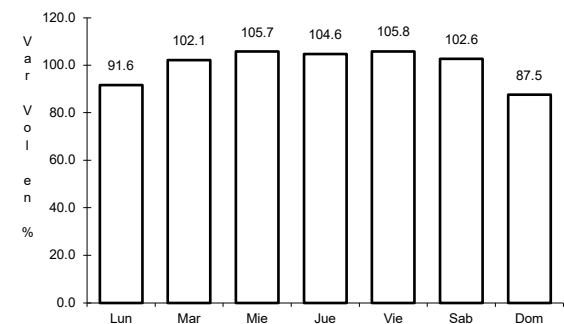
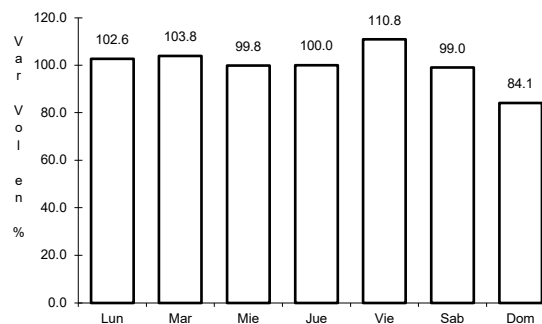
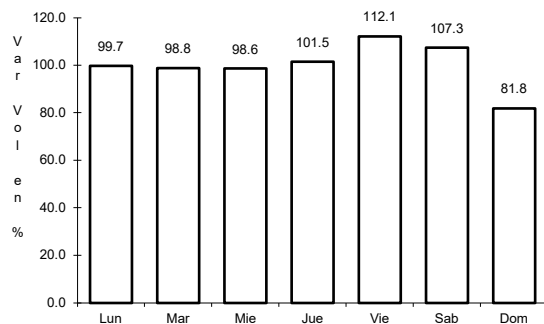
Km: 0.00 Tipo: 3 Sent: 0

Km: 80.00 Tipo: 1 Sent: 0

9 CARR: Gómez Palacio - Jiménez

CLAVE: 00006

ruta: MEX-049



Km: 0.00 Tipo: 3 Sent: 1

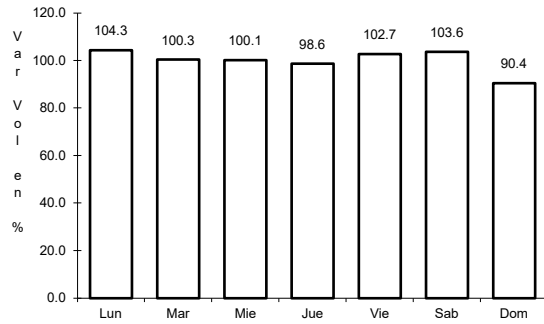
Km: 0.00 Tipo: 3 Sent: 2

Km: 107.95 Tipo: 1 Sent: 0

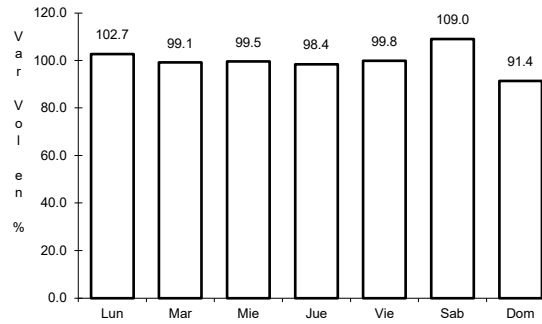
10 CARR: Gómez Palacio - La Unión

CLAVE: 10009

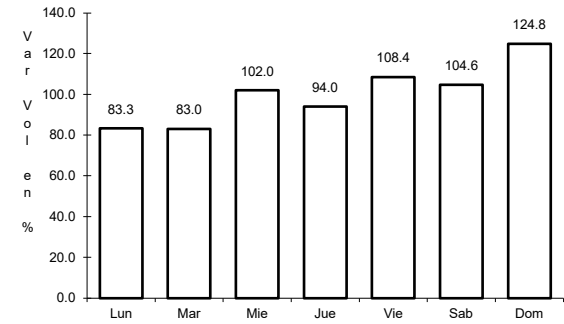
ruta: MEX-040



Km: 0.00 Tipo: 3 Sent: 0



Km: 20.90 Tipo: 1 Sent: 0

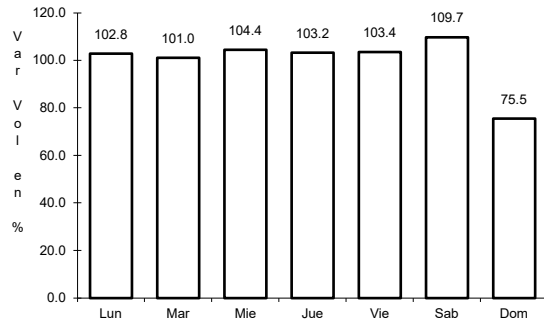


Km: 42.20 Tipo: 1 Sent: 0

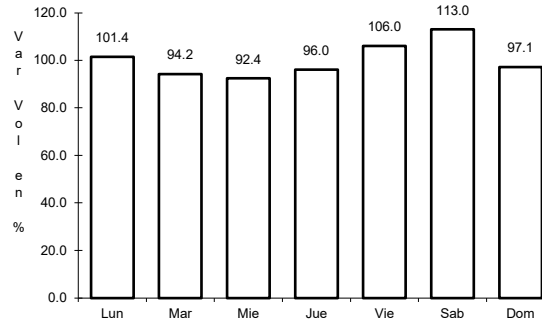
11 CARR: Gómez Palacio - Tlahualillo de Zaragoza

CLAVE: 10005

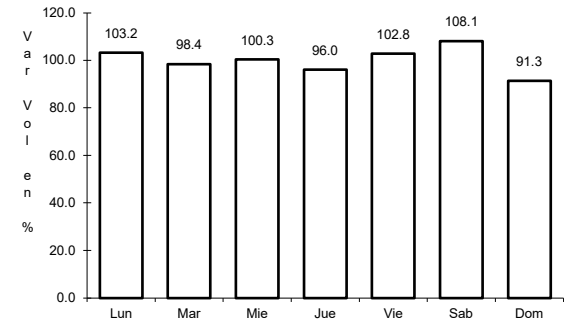
ruta: MEX-040



Km: 5.60 Tipo: 1 Sent: 0



Km: 31.44 Tipo: 1 Sent: 0

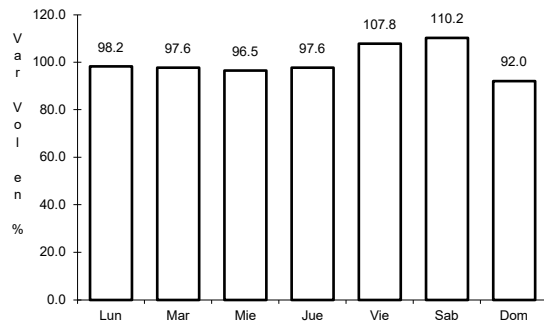


Km: 72.90 Tipo: 1 Sent: 0

12 CARR: Gregorio García - Francisco I. Madero

CLAVE: 00110

ruta: MEX-040

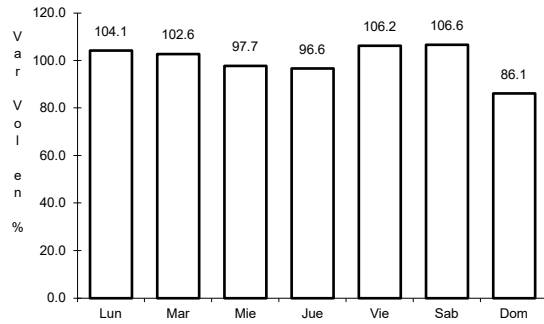


Km: 9.60 Tipo: 1 Sent: 0

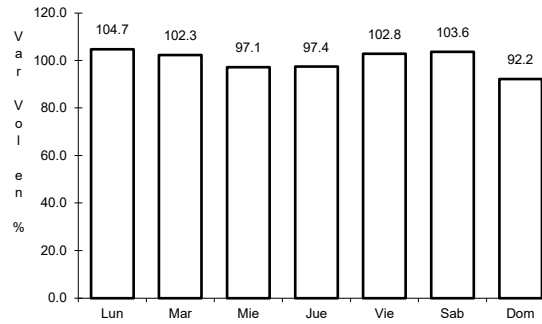
13 CARR: Guadalupe Aguilera - Guanaceví

CLAVE: 10220

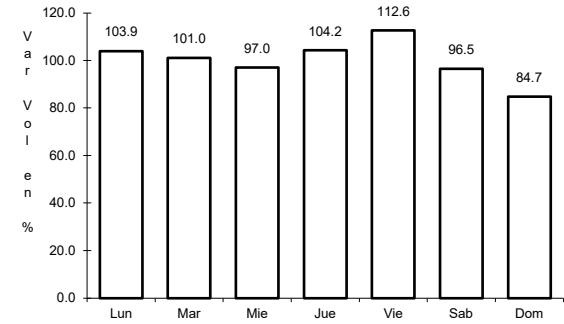
ruta: MEX-023



Km: 0.00 Tipo: 3 Sent: 1



Km: 0.00 Tipo: 3 Sent: 2

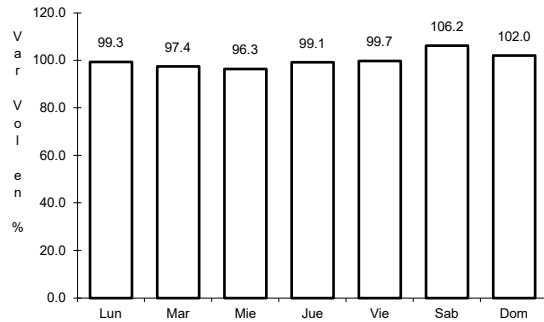


Km: 169.00 Tipo: 1 Sent: 0

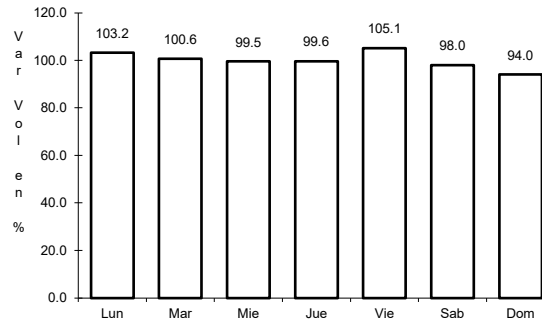
14 CARR: Hidalgo del Parral - Guadalupe y Calvo

CLAVE: 00802

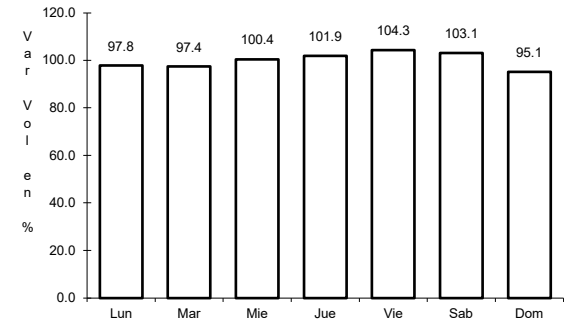
ruta: MEX-024



Km: 0.00 Tipo: 3 Sent: 0



Km: 110.00 Tipo: 1 Sent: 0

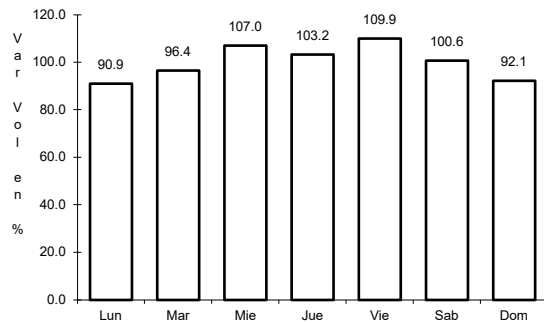


Km: 212.00 Tipo: 1 Sent: 0

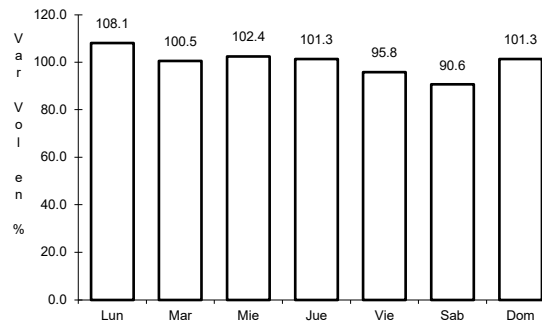
15 CARR: Libramiento Exterior Cuencamé

CLAVE: 10006

ruta: MEX-049



Km: 0.00 Tipo: 3 Sent: 0

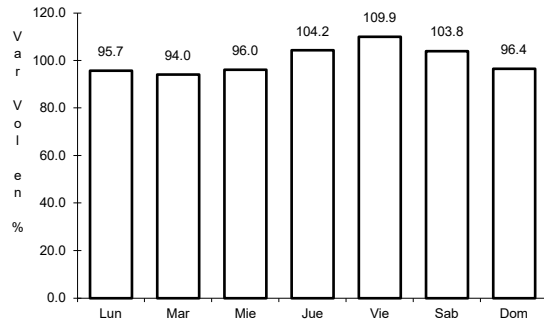


Km: 7.65 Tipo: 1 Sent: 0

16 CARR: Libramiento Nombre de Dios

CLAVE:

ruta: MEX-045



Km: 232.74

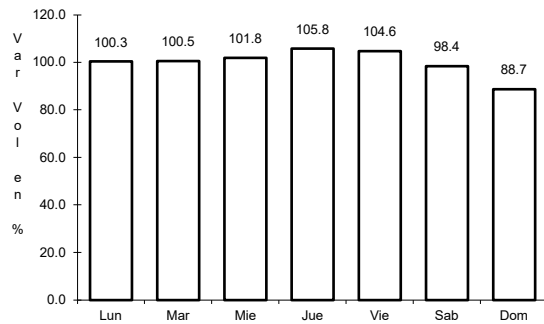
Tipo: 3

Sent: 0

17 CARR: Libramiento Oriente de Durango

CLAVE:

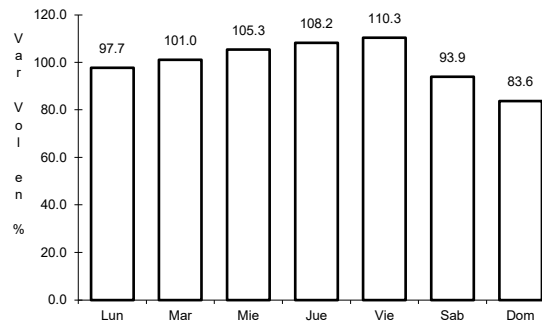
ruta: MEX-045



Km: 0.00

Tipo: 3

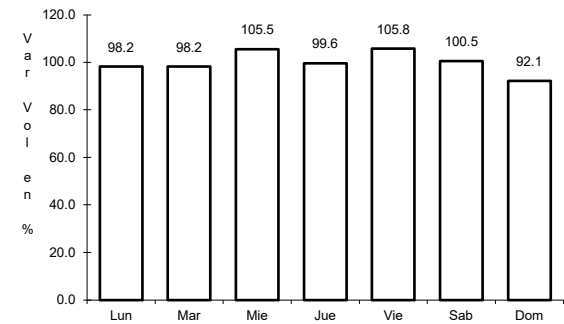
Sent: 1



Km: 0.00

Tipo: 3

Sent: 2



Km: 10.50

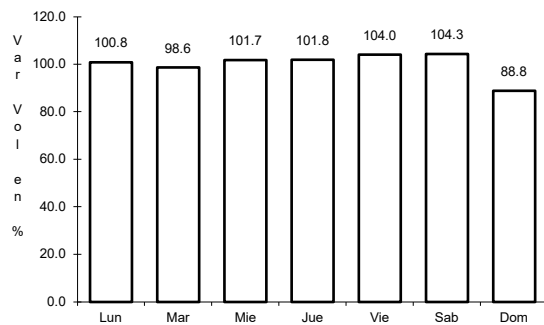
Tipo: 1

Sent: 1

18 CARR: Libramiento Sur de Durango

CLAVE:

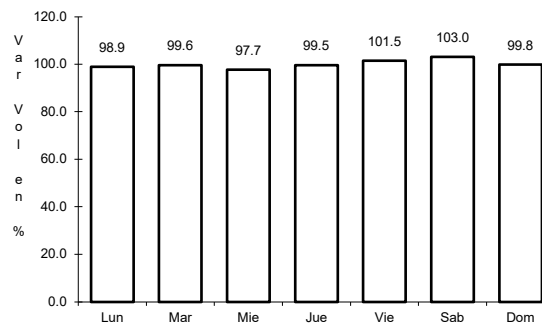
ruta: MEX-045



Km: 0.00

Tipo: 3

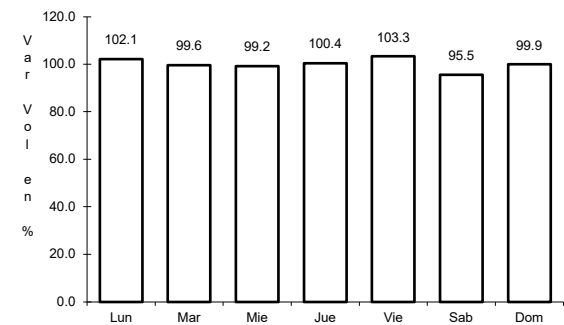
Sent: 0



Km: 19.50

Tipo: 1

Sent: 0



Km: 27.70

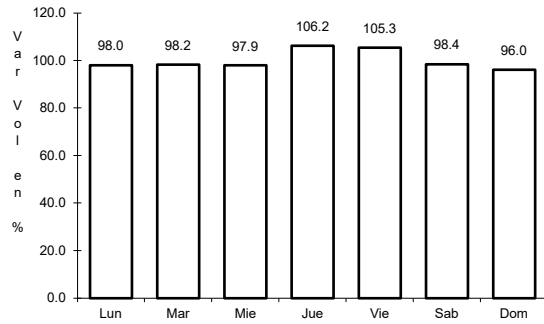
Tipo: 1

Sent: 0

19 CARR: Paso por Chupaderos

CLAVE:

ruta: MEX-045



Km: 0.00

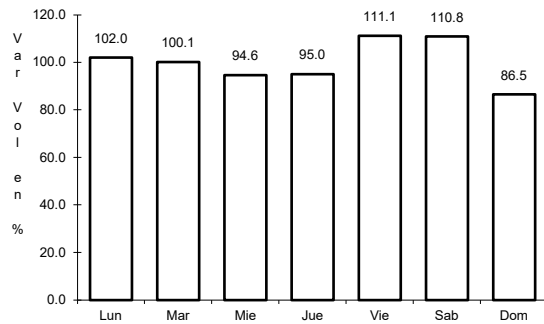
Tipo: 3

Sent: 0

20 CARR: Pedriceña - Ent. Rodeo

CLAVE: 10002

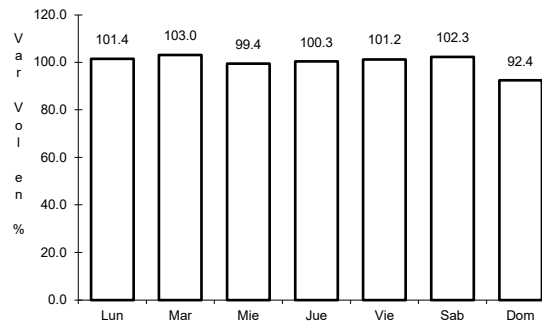
ruta: MEX-034



Km: 0.00

Tipo: 3

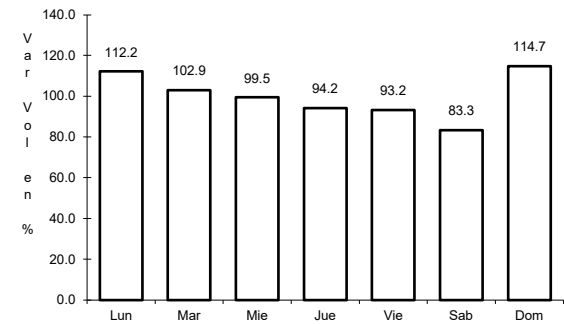
Sent: 0



Km: 45.00

Tipo: 1

Sent: 0



Km: 98.00

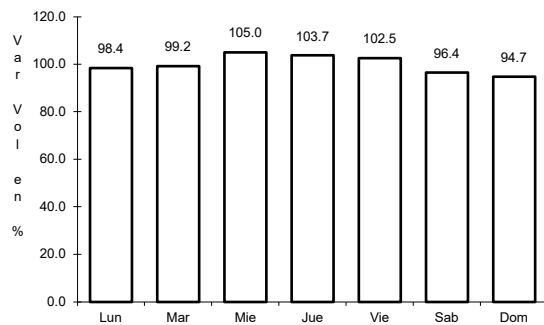
Tipo: 1

Sent: 0

21 CARR: Ramal a Otinapa

CLAVE: 10002

ruta: MEX-040



Km: 0.00

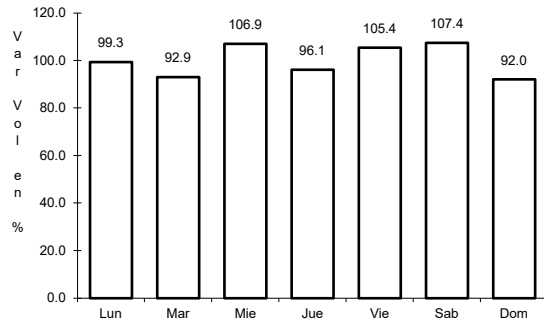
Tipo: 3

Sent: 0

22 CARR: Ramal a Santa Clara

CLAVE: 10287

ruta: MEX-049



Km: 0.00

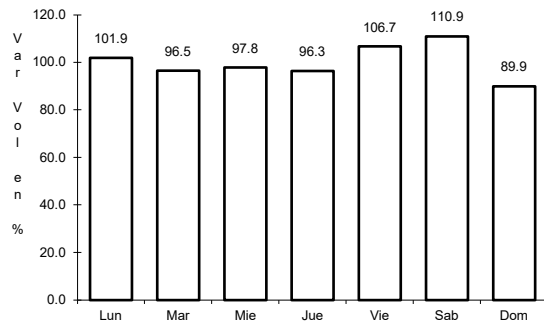
Tipo: 3

Sent: 0

23 CARR: Ramal a Velardeña

CLAVE:

ruta: MEX-040



Km: 0.00

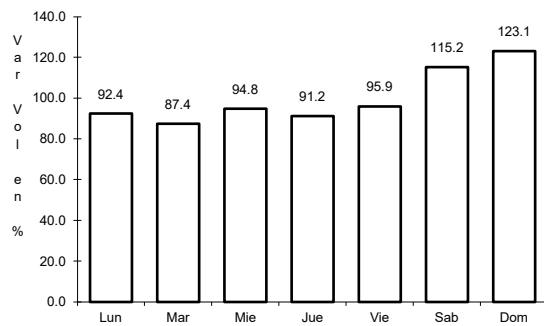
Tipo: 3

Sent: 0

24 CARR: Ramal a Villa Juárez

CLAVE: 10287

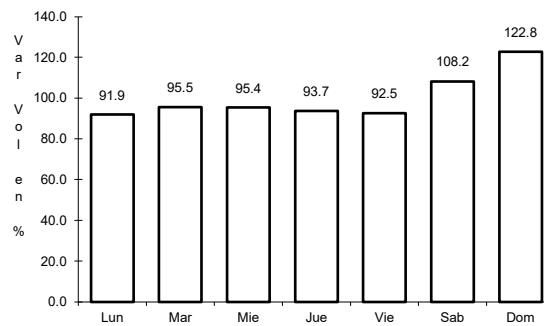
ruta: MEX-040



Km: 0.00

Tipo: 3

Sent: 1



Km: 0.00

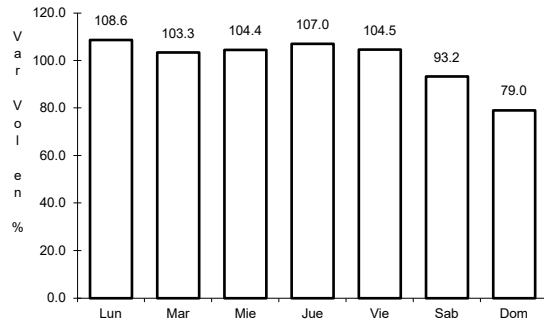
Tipo: 3

Sent: 2

25 CARR: Ramal a Villa Ocampo

CLAVE:

ruta: MEX-045



Km: 0.00

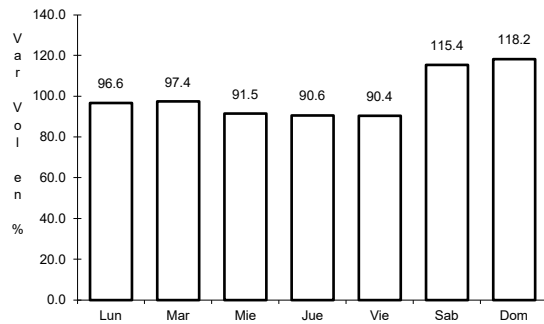
Tipo: 3

Sent: 0

26 CARR: Ramal Distribuidor Presa Peña del Águila

CLAVE: 10016

ruta: MEX-045



Km: 10.50

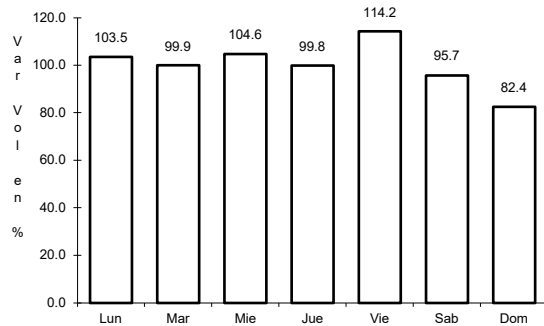
Tipo: 1

Sent: 0

27 CARR: Zacatecas - Durango

CLAVE: 00544

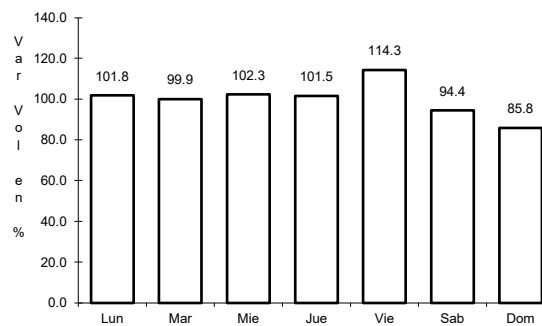
ruta: MEX-045



Km: 6.40

Tipo: 3

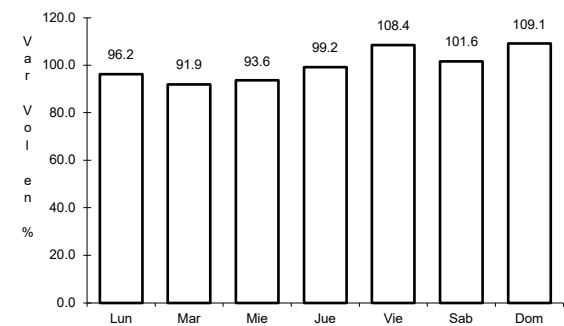
Sent: 1



Km: 6.40

Tipo: 3

Sent: 2



Km: 261.70

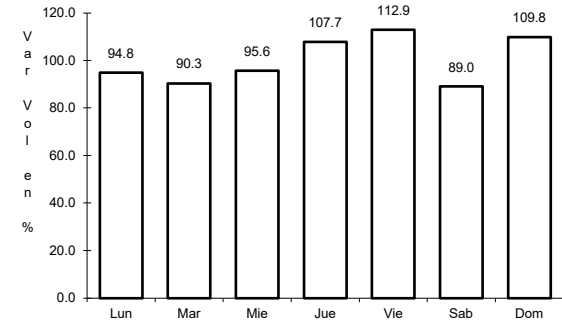
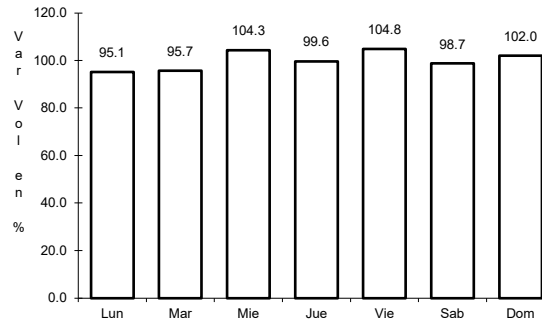
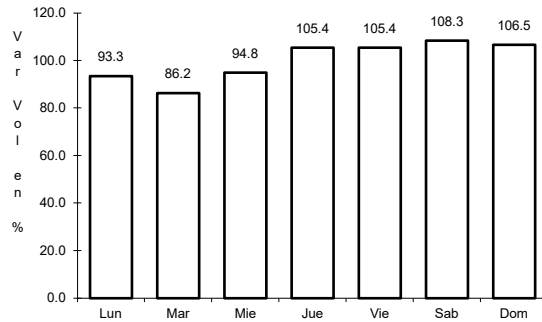
Tipo: 1

Sent: 0

28 CARR: Durango - Mazatlán (Cuota)

CLAVE: 00084

ruta: MEX-040D



Km: 21.30 Tipo: 3 Sent: 0

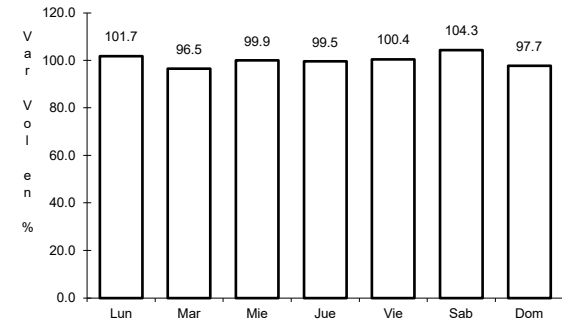
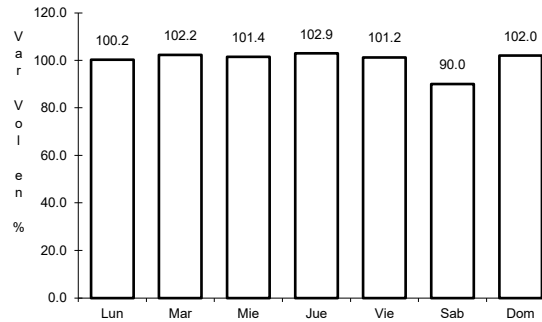
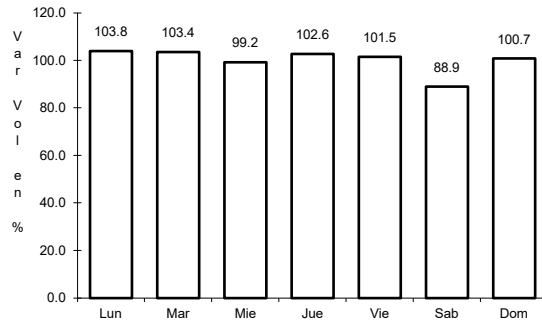
Km: 111.00 Tipo: 3 Sent: 0

Km: 229.70 Tipo: 1 Sent: 0

29 CARR: Durango - Yerbánis (Cuota)

CLAVE: 10003

ruta: MEX-040D



Km: 5.30 Tipo: 1 Sent: 1

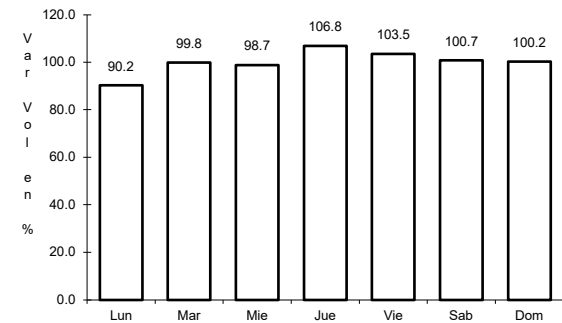
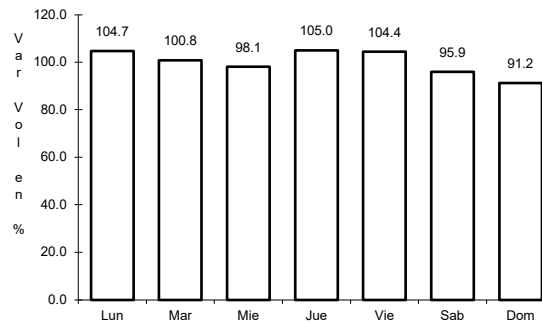
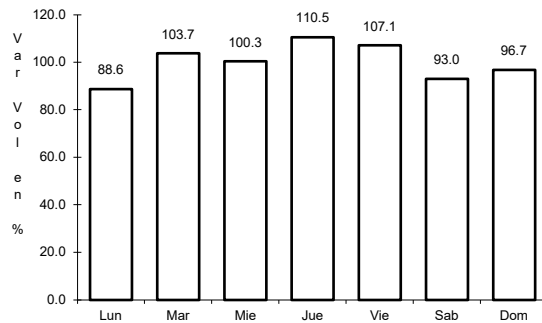
Km: 5.30 Tipo: 1 Sent: 2

Km: 49.10 Tipo: 3 Sent: 1

30 CARR: Gómez Palacio - Corralitos (Cuota)

CLAVE: 00016

ruta: MEX-049D



Km: 40.10 Tipo: 1 Sent: 1

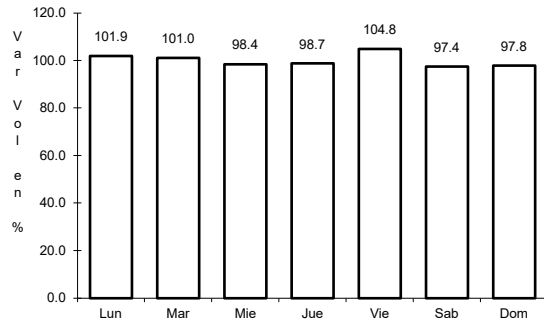
Km: 40.10 Tipo: 1 Sent: 2

Km: 226.50 Tipo: 1 Sent: 1

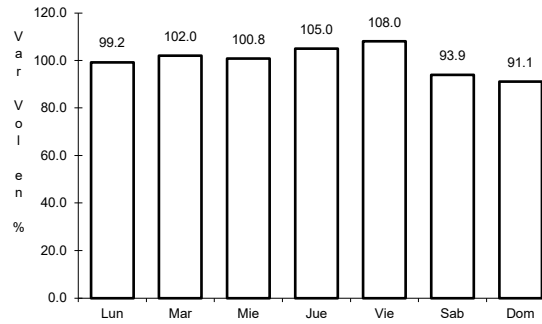
31 CARR: Libramiento de Durango (Cuota)

CLAVE: 10006

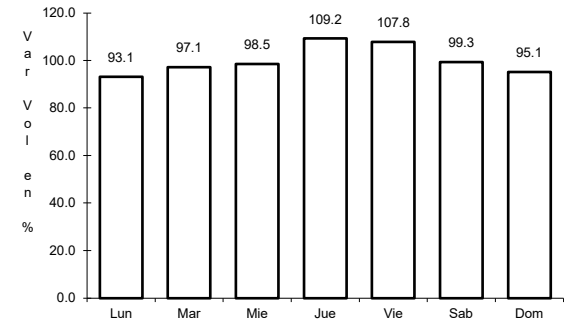
RUTA: MEX-040D



Km: 0.00 Tipo: 3 Sent: 0



Km: 10.40 Tipo: 3 Sent: 0

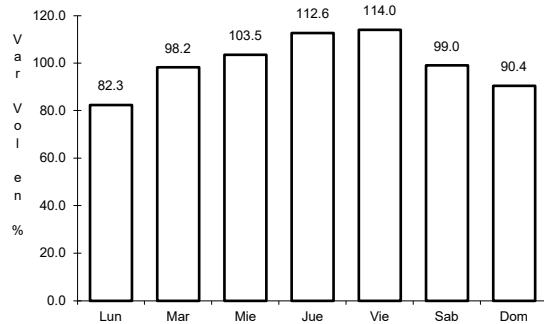


Km: 21.60 Tipo: 1 Sent: 0

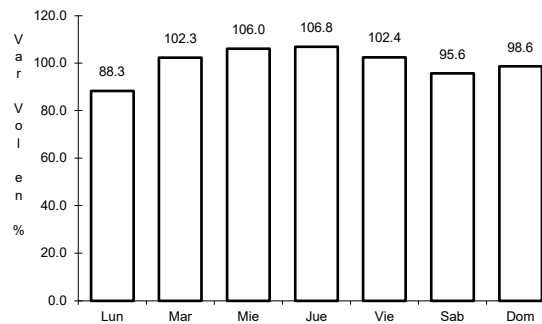
32 CARR: Libramiento Norte de Torreón (Cuota)

CLAVE:

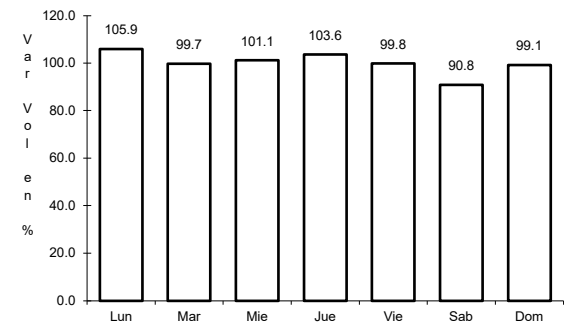
RUTA: MEX-040D



Km: 0.00 Tipo: 3 Sent: 0



Km: 17.36 Tipo: 1 Sent: 0

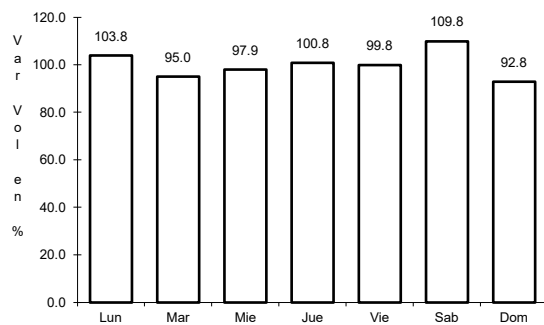


Km: 40.70 Tipo: 1 Sent: 0

33 CARR: Ramal a Guadalupe Victoria

CLAVE:

RUTA: MEX-040D

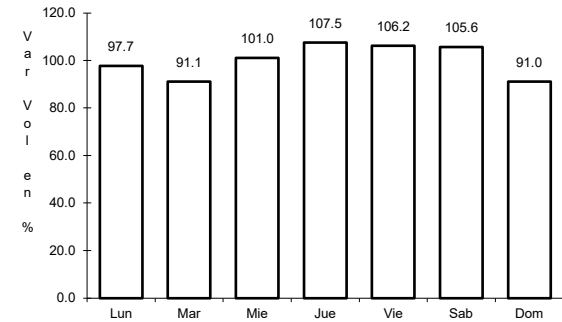
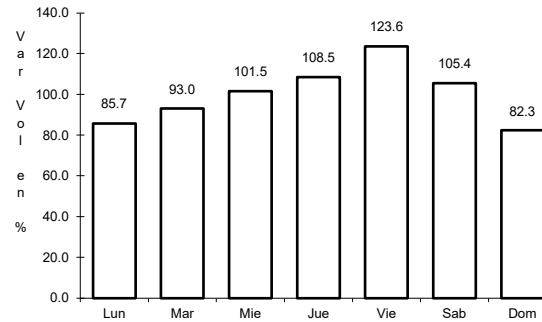
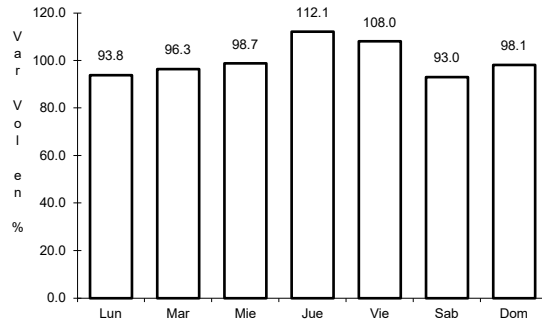


Km: 0.00 Tipo: 3 Sent: 0

34 CARR: Yerbanis - Gómez Palicio (Cuota)

CLAVE: 10003

ruta: MEX-040D



Km: 162.00 Tipo: 1 Sent: 1

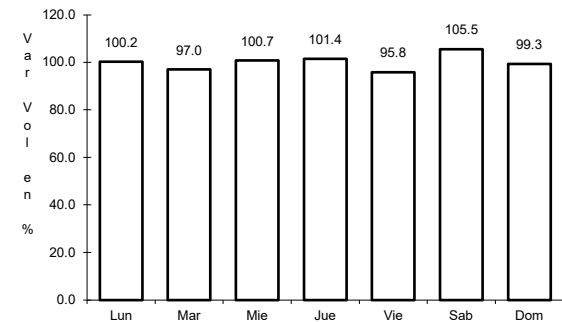
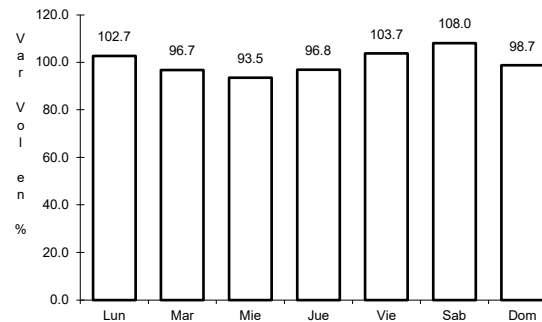
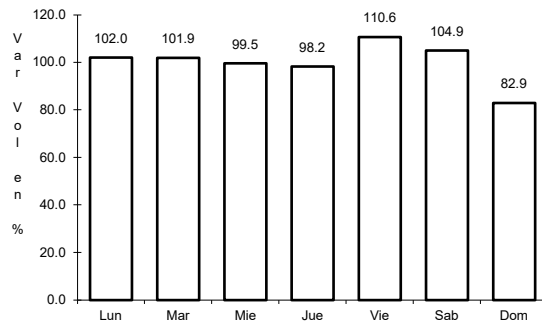
Km: 162.00 Tipo: 1 Sent: 2

Km: 212.71 Tipo: 3 Sent: 1

35 CARR: Amado Nervo - La Ochoa

CLAVE: 10012

ruta: DGO-542



Km: 0.00 Tipo: 3 Sent: 0

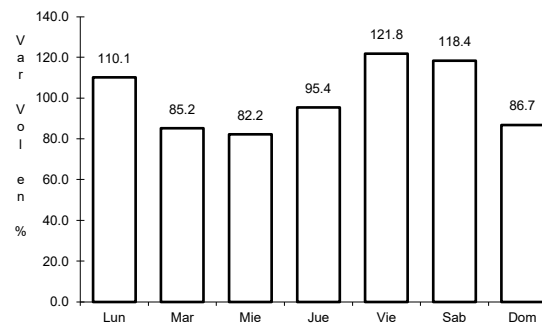
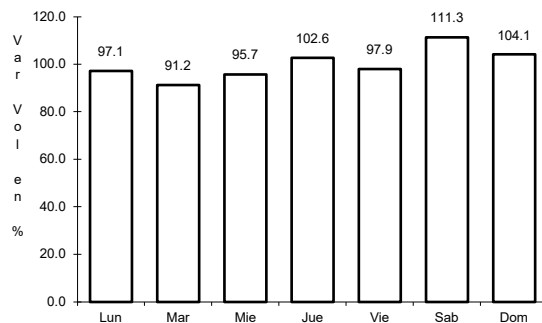
Km: 25.00 Tipo: 1 Sent: 0

Km: 42.00 Tipo: 1 Sent: 0

36 CARR: Ceballos - El Mirador

CLAVE: 10417

ruta: DGO-044



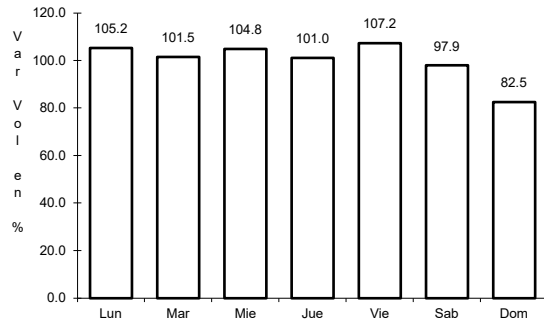
Km: 0.00 Tipo: 3 Sent: 0

Km: 113.50 Tipo: 1 Sent: 0

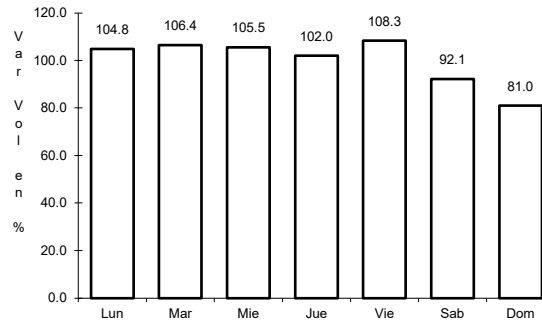
37 CARR: Durango - Aserradero La Flor

CLAVE: 10422

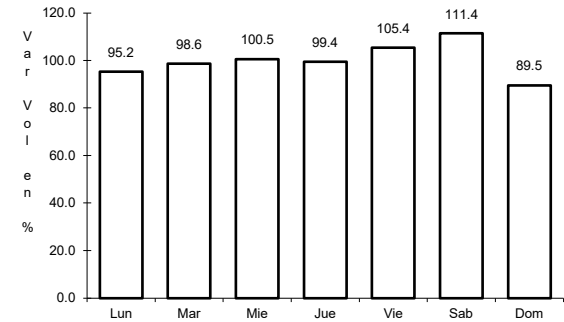
ruta: DGO-115



Km: 0.00 Tipo: 3 Sent: 1



Km: 0.00 Tipo: 3 Sent: 2

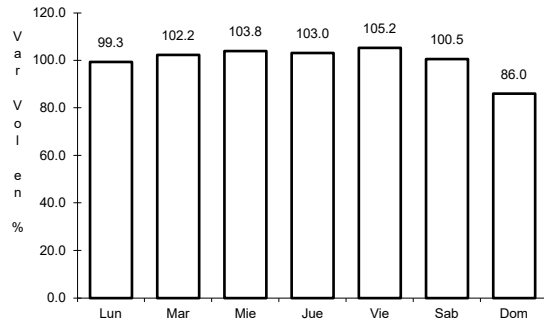


Km: 39.00 Tipo: 1 Sent: 0

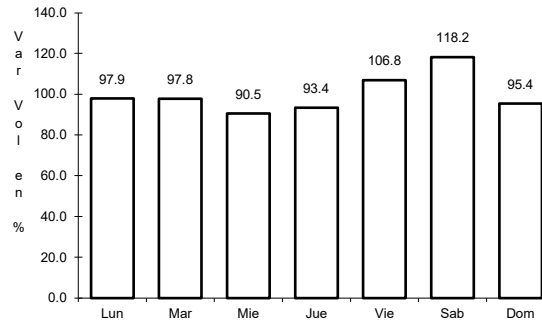
38 CARR: Jabonoso - Esmeralda

CLAVE: 10004

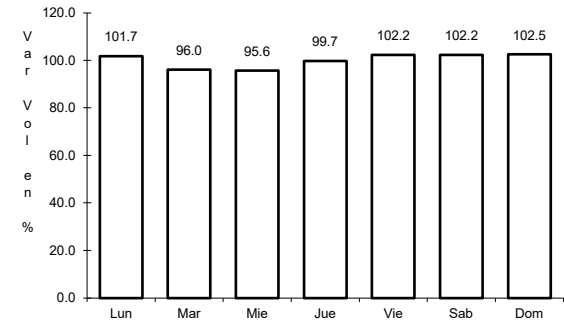
ruta: DGO-363



Km: 0.00 Tipo: 3 Sent: 0



Km: 10.00 Tipo: 3 Sent: 0

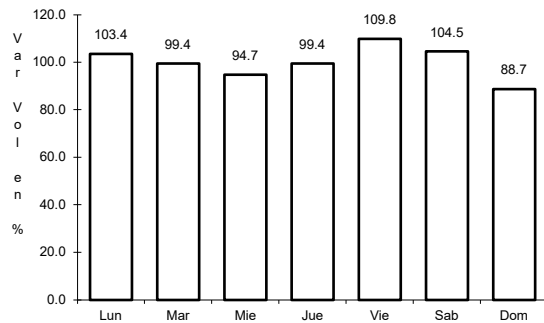


Km: 16.30 Tipo: 1 Sent: 0

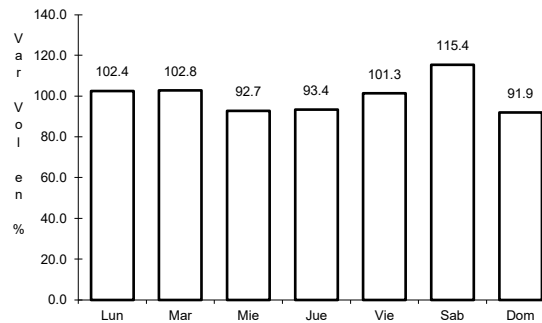
39 CARR: La Torreña - Brittingham

CLAVE: 10010

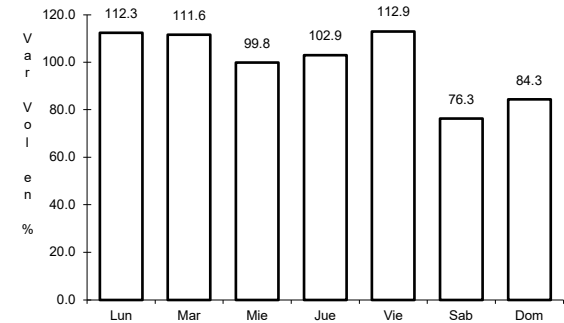
ruta: DGO-325



Km: 0.00 Tipo: 3 Sent: 0



Km: 16.00 Tipo: 1 Sent: 0

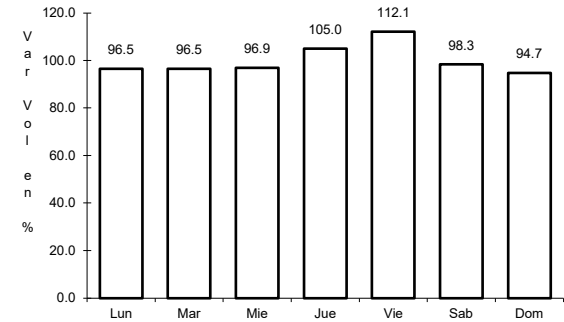
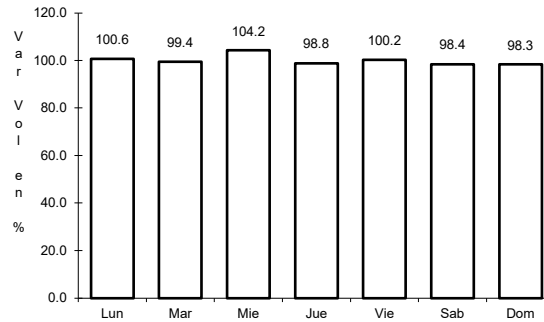
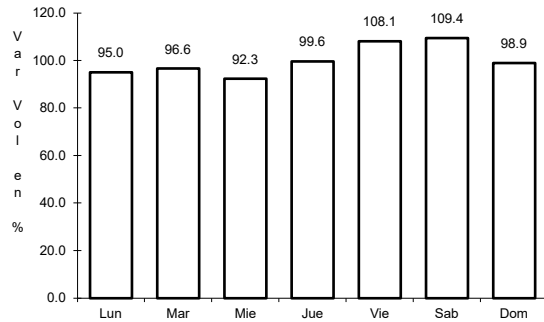


Km: 33.00 Tipo: 1 Sent: 0

40 CARR: Libramiento Cuencamé

CLAVE: 10006

RUTA: DGO



Km: 0.00 Tipo: 3 Sent: 1

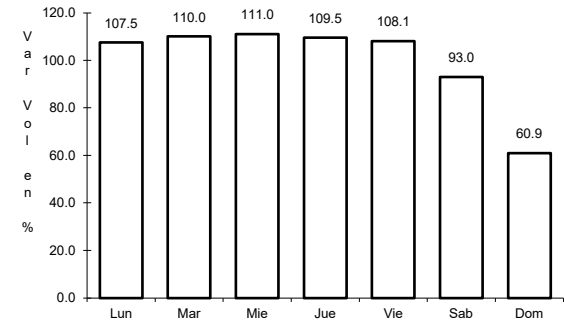
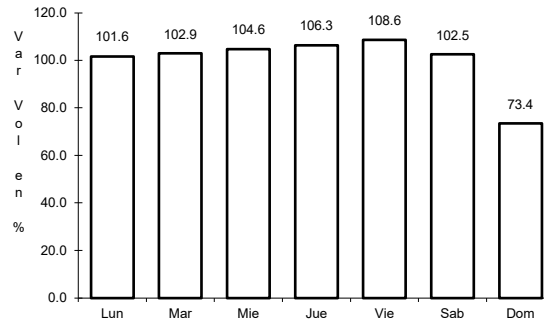
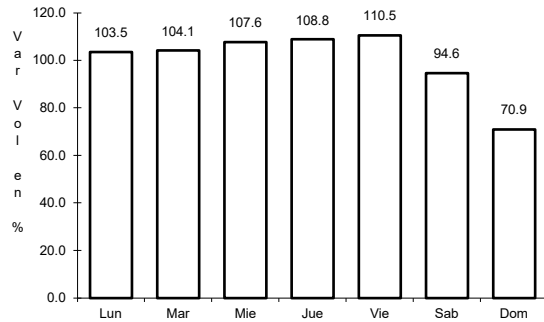
Km: 0.00 Tipo: 3 Sent: 2

Km: 2.60 Tipo: 1 Sent: 1

41 CARR: Libramiento de Torreón-Gómez Palacio-Lerdo

CLAVE: 05516

RUTA: COA-DGO-MEX-040-049



Km: 0.00 Tipo: 3 Sent: 1

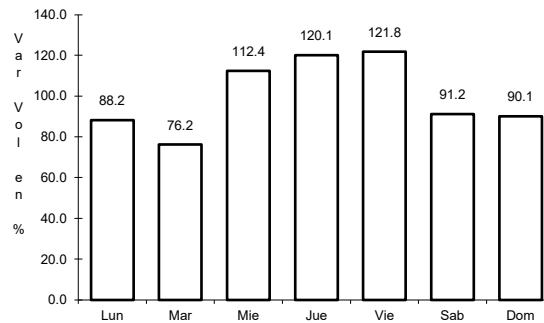
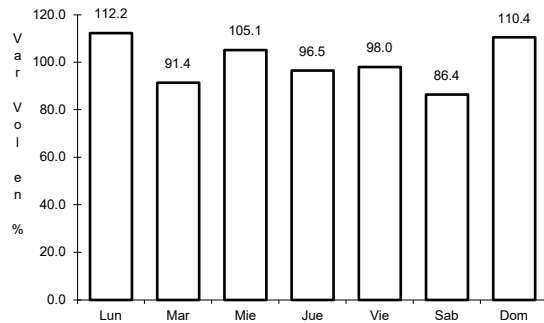
Km: 0.00 Tipo: 3 Sent: 2

Km: 7.30 Tipo: 1 Sent: 1

42 CARR: Mezquital - San Miguel de Temoaya

CLAVE: 10006

RUTA: DGO



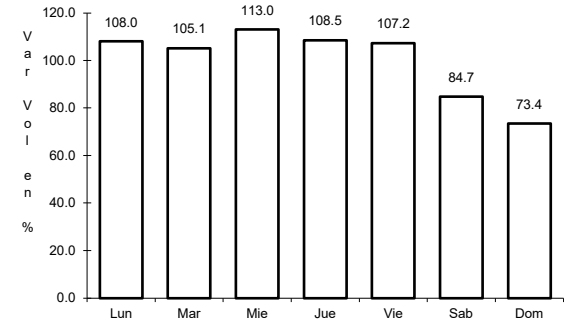
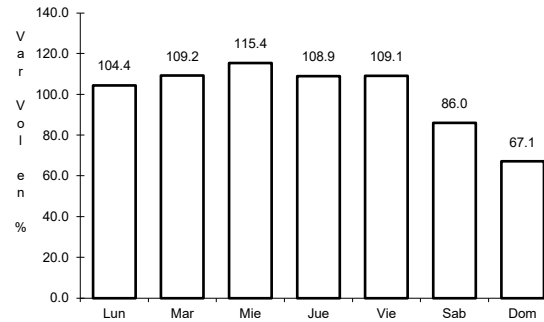
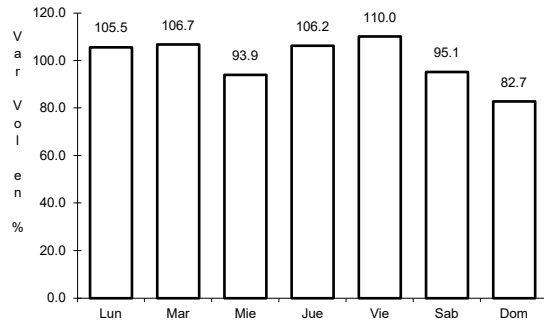
Km: 0.00 Tipo: 3 Sent: 0

Km: 48.00 Tipo: 1 Sent: 0

43 CARR: Ramal a San Juan del Río

CLAVE: 10001

ruta: DGO-290



Km: 0.00 Tipo: 3 Sent: 0

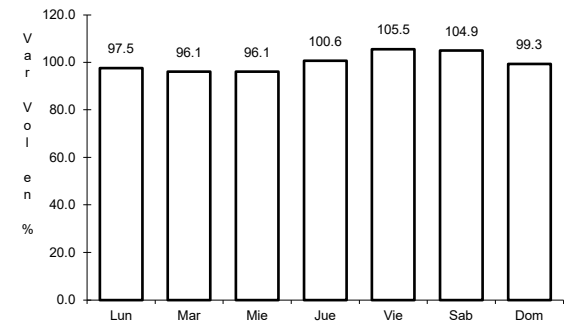
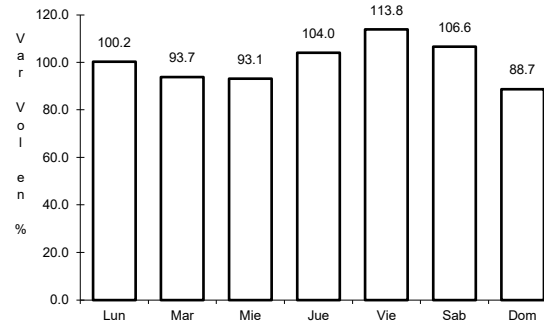
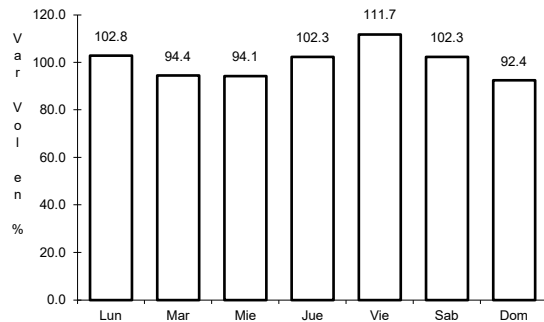
Km: 5.00 Tipo: 1 Sent: 1

Km: 5.00 Tipo: 1 Sent: 2

44 CARR: Súchil - Villa Unión

CLAVE: 10419

ruta: DGO-241



Km: 0.00 Tipo: 3 Sent: 1

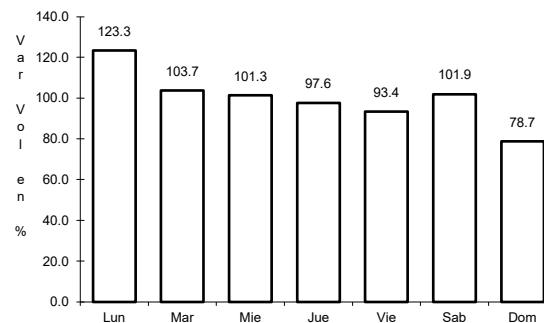
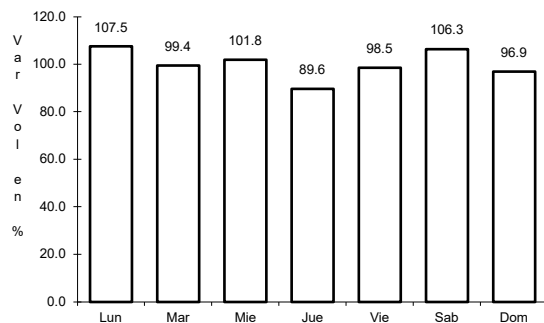
Km: 0.00 Tipo: 3 Sent: 2

Km: 41.40 Tipo: 1 Sent: 0

45 CARR: Tlahualillo de Zaragoza - T.C. Gómez Palacio - Jiménez

CLAVE: 10419

ruta: MEX-040-DGO



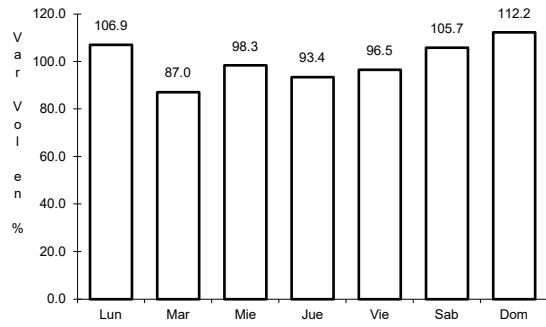
Km: 0.00 Tipo: 3 Sent: 0

Km: 37.00 Tipo: 1 Sent: 0

46 CARR: Yerbanis - Peñón Blanco

CLAVE: 10032

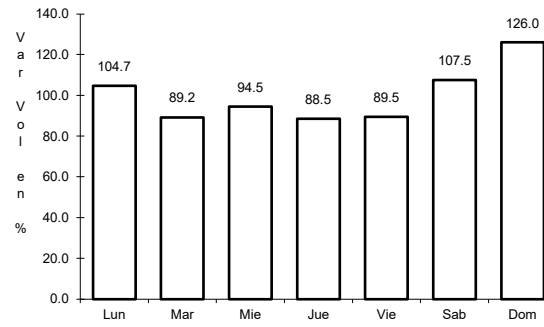
RUTA: DGO-316



Km: 0.00

Tipo: 3

Sent: 0



Km: 22.00

Tipo: 1

Sent: 0